

BOBCAT COMPANY PRICE PAGES

NA LOADERS – SKID-STEER



Please note the following when using Bobcat Price Pages:

- All prices are shown in U.S. dollars.
- Check BobcatNET Pricing Homepage for current Canadian exchange rate.
- To ensure having the correct Part Number for a Dealer Installed Accessory, obtain the loader model and serial number and check with Dealer Parts Department.
- For the most current Dealer Installed Accessories pricing, reference BobQuote or Dealer Parts Department.
- Prices and specifications are subject to change without notice.

THE FOLLOWING UPDATES HAVE BEEN MADE TO THIS DOCUMENT:

01/01/2015	Effective Thursday, January 1 st , 2015 Bobcat Company has adjusted the SLP of select options and power units.
01/01/2015	Discontinued H31 Cab Package, H71 Cab Package and P03-F40 High Flow and Hydraulic Bucket Positioning Package.
03/23/2015	Added Tier 4 S750, S770 and S850.
05/15/2015	Updated select Dealer Installed Accessories.
06/30/2015	Updated price for Forestry Applications Kit
09/14/2015	Added S595 Skid-Steer Loader.
07/01/2016	Effective Friday, July 1 st , 2016 Bobcat Company has adjusted the SLP of select power units and attachments.
10/12/2016	Updated with M2-Series loaders
4/26/2017	Add Reversing Fan Kits to Dealer Installed Accessories on select machines.
10/1/2017	Effective Monday, Oct 2 nd , 2017 Bobcat Company has adjusted the SLP of select power units and attachments.
10/03/2017	Replaced Vinyl Air Ride Seat option with Heated Cloth Air Ride Seat option.
01/01/2018	Add extended warranty to Bobcat engine machines
01/01/2018	Adjusted SLP of select machines on January 1 st 2018.
01/26/2018	Added rear camera kit on select loaders.
05/01/2018	Effective Tuesday, May 1, 2018 Bobcat Company has adjusted the SLP of select options and power units.
01/01/2019	Discontinued the following options; Severe Duty Tires: R09-C04, Severe Duty Poly Filled: R09-C05, Super Float Off-set Tires: R09-C11, ACS Controls: R01-C03

**Certain Specification(s) are based on engineering calculations and are not actual measurements. Specification(s) are provided for comparison purposes only and are subject to change without notice. Specification(s) for your individual Bobcat equipment will vary based on normal variations in design, manufacturing, operating conditions, and other factors.*

S70 (Tier 4) BOBCAT SKID STEER LOADER



STANDARD EQUIPMENT

- | | |
|--|--|
| 23.5 HP Tier 4 Diesel Engine
Auxiliary Hydraulics
Backup Alarm
Bob-Tach
Bobcat Interlock Control System (BICS™)
Controls: Bobcat Standard
Glow Plugs (Automatically Activated)
Horn
Instrumentation: Hourmeter, Engine Temperature Gauge,
Fuel Gauge (On Tank), Voltmeter and Warning Lights
Lift Arm Support
Lift Path: Radius | Lights: Front & Rear
Operator Cab <ul style="list-style-type: none"> • Includes: Adjustable Cushion Seat, Parking Brake, Rear Window, Seat Bar, Seat Belt • Roll Over Protective Structure (ROPS) meets SAE-J1040 & ISO 3471 • Falling Objects Protective Structure (FOPS) meets SAE-J1043 & ISO 3449, Level I Spark Arrestor Muffler
Tires, 23 x 5.70-12, 4 PR, Bobcat Standard Duty
Warranty: 12 Months, Unlimited Hours |
|--|--|

QUICK SPECS

Rated Operating Capacity	700 lbs.
Engine Model.....	D1005-E4B
Engine Fuel	Diesel
Engine Cooling	Liquid
Horsepower	23.5
Hydraulic Pump Capacity-Standard Flow.....	9.8 GPM
Travel Speed	6.1 MPH
Operating Weight.....	2,795 lbs.
Shipping Weight	2,444 lbs.
Cab Height	71.4"
Width (w/out Attachment)	35.5"
Length (w/out Attachment)	75.8"
Wheelbase	28.4"
Reach at Maximum Height	15.8"
Height to Hinge Pin.....	94.5"

S70 (Tier 4) BOBCAT SKID STEER LOADER

PART NUMBER	DESCRIPTION	SLP IN US \$
-------------	-------------	--------------

M0041	S70 BOBCAT SKID-STEER LOADER (EQUIPPED WITH T4 ENGINE)	\$22,258
-------	--	----------

PART NUMBER	DESCRIPTION	SLP IN US \$
-------------	-------------	--------------

M0041-R02-C02	CAB ENCLOSURE WITH HEATER AND SOUND REDUCTION \$1,838 Includes Heater, Front Door with Wiper, Top and Side Sliding Windows, Rubber Floor Covers, Side Instrument Panel and Sound Reducing Foam Insulation.	
M0041-A01-C04	SOUND REDUCTION OPTION \$231 Includes Sound Reducing Foam Insulation, Top Window and Rear Portion of Side Windows. Cannot be ordered with Cab Enclosure with Heater and Sound Reduction.	
M0041-R05-C03	SUSPENSION SEAT \$194	
M0041-R09-C02	23X 8.50-12, 6 PR, HEAVY DUTY TIRES \$194 Set of four tires in place of base equipment. Loader width 44"	

PART NUMBER	DESCRIPTION	SLP IN US \$
-------------	-------------	--------------

Spare Wheel and Tire Assemblies

7147739	23 x 5.70-12,4 PR, BOBCAT STANDARD DUTY TIRE - LEFT ASSEMBLY \$80 Spare wheel and tire assembly. Loader width 35.4 in.	
7147740	23 x 5.70-12, 4 PR, BOBCAT STANDARD DUTY TIRE - RIGHT ASSEMBLY \$80 Spare wheel and tire assembly. Loader width 35.4 in.	
7147741	23 X 8.50-12, 6 PR, BOBCAT HEAVY DUTY TIRE - LEFT ASSEMBLY \$135 Spare wheel and tire assembly. Loader width 44 in.	
7147742	23 X 8.50-12, 6 PR, BOBCAT HEAVY DUTY TIRE - RIGHT ASSEMBLY \$135 Spare wheel and tire assembly. Loader width 44 in.	

Cab Accessories

6732187	CAB ENCLOSURE KIT \$920 Includes Front Door with Wiper and washer, Top & Sliding Side Windows and Rubber Floor Covers. Side Instrument Panel is required; reference P/N 7154283 for detail. Est. Install time: 9.25 hrs.	
---------	--	--

PART NUMBER	DESCRIPTION
-------------	-------------

Part numbers for kits in this section are current as of May 2015 and pertain to current loader models as of that date. To ensure having the correct Part Number for a Dealer Installed Accessory, obtain the loader model and serial number and check with Dealer Parts Department. For the most current Dealer Installed Accessories pricing, refer to BobQuote or Dealer Parts Department.

Cab Accessories

6653437	CAB ENCLOSURE, VINYL \$ _____ Cab enclosure includes vinyl coated nylon fabric with clear vinyl windows that provide visibility to the front, top, rear and sides of the loader. Est. Install time: 1 hr.	
6729392	DOOR KIT \$ _____ Includes window wiper and washer. Side Instrument Panel is required; reference P/N 7154283 for detail. Est. Install time: 5 hrs.	
7194019	HEATER KIT \$ _____ Includes plumbing kit. Est. Install time: 2 hrs. to install heater and plumbing kit	
6712972	KEYLESS START KIT \$ _____ Est. Install time: 1.5 hrs.	
6734641	REPLACEMENT OPERATOR CAB KIT \$ _____ Est. Install time: 2.5 hrs.	
7154283	SIDE INSTRUMENT PANEL KIT \$ _____ Provides a side instrument panel that is used to supply the electrical power for various kits. Est. Install time: 1 hr.	

S70 (Tier 4)

BOBCAT SKID STEER LOADER

PART NUMBER DEALER INSTALLED ACCESSORIES- ORDER FROM PARTS DESCRIPTION

Cab Accessories (continued)

6706993	SLIDING SIDE WINDOWS KIT Est. Install time: 3 hrs.	\$ _____
6729391	SPECIAL APPLICATIONS POLYCARBONATE DOOR & WINDOW KIT Provides added operator protection during some attachment applications. Includes Polycarbonate Door, Top and Rear Windows. Est. Install time: 5 hrs.	\$ _____
7111126	TOP WINDOW KIT Est. Install time: 0.75 hr.	\$ _____

Electrical Accessories

_____	ATTACHMENT CONTROL KIT For complete listing of Attachment Control Kits, P/N's and Descriptions – Refer to the Attachments Section of the Price Pages.	\$ _____
7172383	BACKUP ALARM KIT Est. Install time: 1 hr.	\$ _____
6708548	HORN KIT Est. Install time: 1 hr.	\$ _____
6709755	FOUR-WAY FLASHER / TURN SIGNAL KIT Cab Accessory Harness or Cab Accessory Adapter Harness is required; Reference Cab Accessory Harness & Lower Interior Panels kit or Cab Accessory Adapter Harness for details. Est. Install time: 1 hr.	\$ _____
6708342	ROTATING BEACON LIGHT KIT Side Instrument Panel is required; reference P/N 7154283 for detail. Est. Install time: 0.75 hr.	\$ _____
6587526	STROBE LIGHT KIT, AMBER Est. Install time: 1 hr.	\$ _____

Engine Accessories

6680999	CATALYTIC EXHAUST PURIFIER Est. Install time: 1 hr.	\$ _____
6720808	ENGINE BLOCK HEATER Est. Install time: 1 hr.	\$ _____
7167046	RENTAL KIT Monitors Temperature and Pressure (Engine Oil and Hydraulic Oil) Est. Install time: 2 hrs.	\$ _____

Hydraulic Accessories

7154282	HYDRAULIC BUCKET POSITIONING KIT Bucket Positioning helps the operator keep the same tilt position of the load during lifting. Includes on/off switch. Side Instrument Panel is required; reference P/N 7154283 for detail. Est. Install time: 2.5 hrs.	\$ _____
----------------	---	----------

Lift Kits

6565785	SINGLE POINT LIFT KIT Est. Install time: 3 hrs.	\$ _____
----------------	---	----------

Seats & Seat Belts

6703640	SEAT BELT KIT, 3" WIDE (STANDARD SEAT) For use with Standard Seat only. Includes 3" lap belt. Est. Install time: 0.5 hr.	\$ _____
6707918	SUSPENSION SEAT KIT Est. Install time: 0.5 hr.	\$ _____

Training Kits

6901726	BOBCAT LOADER OPERATOR TRAINING KIT Est. Install time: 0.5 hr.	\$ _____
6900641	BOBCAT LOADER SERVICE TRAINING KIT Est. Install time: 0.5 hr.	\$ _____
6904762	BOBCAT OPERATOR SAFETY DVD Includes all of the 10-minute operator safety videos in both English and Spanish.	\$ _____

S70 (Tier 4) BOBCAT SKID STEER LOADER

PART NUMBER DEALER INSTALLED ACCESSORIES- ORDER FROM PARTS DESCRIPTION

OTHER ACCESSORIES

7023550	LOCKING FUEL CAP Includes a Black Locking Fuel Cap which is keyed the same as the loader. Key is Not included. Additional locking fuel cap options are available through parts.	\$ _____
----------------	--	----------

S450 (Tier 4)

BOBCAT SKID STEER LOADER



STANDARD EQUIPMENT

- | | |
|--|---|
| 49 HP Turbo Tier 4 Diesel Engine
Auxiliary Hydraulics: Variable Flow
Backup Alarm
Bob-Tach
Bobcat Interlock Control System (BICS™)
Controls: Bobcat Standard
Engine/Hydraulic Systems Shutdown
Glow Plugs (Automatically Activated)
Horn
Instrumentation: Engine Temperature & Fuel Gauges,
Hourmeter, RPM and Warning Lights
Lift Arm Support
Lift Path: Radius | Lights, Front & Rear
Operator Cab <ul style="list-style-type: none"> • Includes: Adjustable Cushion Seat, Top & Rear Windows, Parking Brake, Seat Bar & Seat Belt • Roll Over Protective Structure (ROPS) meets SAE-J1040 & ISO 3471 • Falling Object Protective Structure (FOPS) meets SAE-J1043 & ISO 3449, Level I; (Level II is available through Bobcat Parts) Spark Arrestor Exhaust System
Tires: 10-16.5, 10 PR, Bobcat Heavy Duty |
|--|---|

QUICK SPECS

Rated Operating Capacity.....	1,300 lbs.
Engine Model	1.8L Bobcat Engine
Engine Fuel.....	Diesel
Engine Cooling.....	Liquid
Horsepower	49
Hydraulic Pump Capacity-Standard Flow	16.7 GPM
Travel Speed.....	7.1 MPH
Travel Speed – 2 Speed with SJC	6.5/9.2 MPH
Operating Weight	5,027 lbs.
Shipping Weight.....	4,520 lbs.
Cab Height.....	77.8"
Width (w/out Attachment).....	58.6"
Length (w/out Attachment)	98.4"
Wheelbase	35.4"
Reach at Maximum Height.....	20.8"
Height to Hinge Pin.....	109.5"

S450 (Tier 4) BOBCAT SKID STEER LOADER

PART NUMBER	DESCRIPTION	SLP IN US \$
-------------	-------------	--------------

M0201	S450 SKID STEER LOADER (EQUIPPED WITH TIER 4 ENGINE)	\$34,857
-------	--	----------

AIR CONDITIONED/HEATED CAB PACKAGES		
PART NUMBER	DESCRIPTION	SLP IN US \$

M__-P01-A51	A51 OPTION PACKAGE	\$5,369
-------------	--------------------------	---------

A51
 Enclosed Cab with AC/Heat
 Suspension Seat
 Cab Accessories Package*
 Power Bob-Tach

HEATED CAB PACKAGES		
PART NUMBER	DESCRIPTION	SLP IN US \$

M__-P01-H51	H51 OPTION PACKAGE	\$3,798
-------------	--------------------------	---------

H51
 Enclosed Cab with Heat
 Suspension Seat
 Cab Accessories Package*
 Power Bob-Tach

OPEN CAB PACKAGES		
PART NUMBER	DESCRIPTION	SLP IN US \$

M__-P01-O31	O31 OPTION PACKAGE	\$957
-------------	--------------------------	-------

O31
 Suspension Seat
 Cab Accessories Package*

**Cab Accessories Package: Deluxe Headliner with Dome Light, Cab Accessory Harness, Power Port, Lower Interior Panels with Storage Compartments and Cup Holder.*

FACTORY INSTALLED OPTIONS		
PART NUMBER	DESCRIPTION	SLP IN US \$

M__-R01-C04	<p style="text-align: center;"><u>Controls</u></p> SELECTABLE JOYSTICK CONTROL (SJC) WITH 2 SPEED	\$2,013
-------------	---	----------------

Features include: 2 Speed Travel, Selectable patterns (ISO or H-Pattern), Auto Idle, Horsepower Management, Speed Management, Drive Response, Drift Compensation and Foot Pedal for Engine Speed Control.

Must order the A51 or O51 Cab Package. Not allowed with H51 Package.

S450 (Tier 4)

BOBCAT SKID STEER LOADER

PART NUMBER	DEALER INSTALLED ACCESSORIES – ORDER FROM SALES DESCRIPTION	SLP IN US \$
<i><u>Spare Wheel and Tire Assemblies</u></i>		
7210487	10-16.5, 8 PR, BOBCAT STANDARD DUTY TIRE - LEFT Spare Wheel and Tire Assembly.	\$234
7210488	10-16.5, 8 PR, BOBCAT STANDARD DUTY TIRE - RIGHT Spare Wheel and Tire Assembly.	\$234
7109588	10-16.5, 10 PR, BOBCAT HEAVY DUTY TIRE - LEFT Spare Wheel and Tire Assembly.	\$303
7109589	10-16.5, 10 PR, BOBCAT HEAVY DUTY TIRE - RIGHT Spare Wheel and Tire Assembly.	\$303
7109596	10-16.5, 10 PR, BOBCAT SEVERE DUTY TIRE Spare Wheel and Tire Assembly.	\$493
7109604	10-16.5, 10 PR, BOBCAT SEVERE DUTY TIRE-POLY-FILL Spare Wheel and Tire Assembly.	\$658

S450 (Tier 4) BOBCAT SKID STEER LOADER

PART DEALER INSTALLED ACCESSORIES – ORDER FROM PARTS NUMBER DESCRIPTION

Part numbers for kits in this section are current as of July 2017 and pertain to current loader models as of that date. To ensure having the correct Part Number for a Dealer Installed Accessory, obtain the loader model and serial number and check with Dealer Parts Department. For the most current Dealer Installed Accessories pricing, refer to BobQuote or Dealer Parts Department.

Cab Accessories – Enclosures, Doors, Windows

7128393	CAB ENCLOSURE DOOR KIT Cab Accessory Harness is required, see Cab Accessory Harness & Lower Interior Panels kit for details. Includes Front Door with Sensor Switch and Wiper/Washer. Must also order Side Windows Kit and Cab Seals Kit to completely enclose cab. Est. Install time: 3.5 hrs.	\$ _____
7186723	FOPS WINDOW KIT Est. Install time: 10 min.	\$ _____
7174127	FORESTRY DOOR KIT Cab Accessory Harness is required, see Cab Accessory Harness & Lower Interior Panels kit for details. Est. Install time: 2 hrs.	\$ _____
7182335	SLIDING SIDE LEXAN WINDOWS KIT Includes 2 Sliding Side Lexan Windows. Est. Install time: 1 hr.	\$ _____
7128342	SLIDING SIDE WINDOWS KIT Includes 2 Sliding Side Windows. Must also order Cab Enclosure Door Kit to completely enclose cab. Est. Install time: 1 hr.	\$ _____
7128395	SPECIAL APPLICATIONS POLYCARBONATE DOOR KIT Provides added operator protection during some attachment applications. Includes ½" thick polycarbonate front door. Must order a Side Windows Kit, Cab Seals Kit and Special Applications Rear Window to completely enclose cab. Est. Install time: 3 hrs.	\$ _____
7214673	SPECIAL APPLICATIONS POLYCARBONATE REAR WINDOW KIT Provides added operator protection during some attachment applications. Includes ½" thick polycarbonate rear window. Must order a Side Windows Kit, Cab Seals Kit and Special Applications Front Door to completely enclose cab. Est. Install time: 0.5 hr.	\$ _____

Cab Accessories – Heat and Air Conditioning

7244628	AIR CONDITIONING KIT Loader must be equipped with Cab Enclosure with Heater. Est. Install time:	\$ _____
7128484	HEATER KIT Cab Accessory Harness is required, see Cab Accessory Harness & Lower Interior Panels kit for details. Must also order heater plumbing kit. Est. Install time: 5 hrs. to install heater and plumbing kit	\$ _____
7244626	HEATER PLUMBING KIT Est. Install time: 5 hrs. to install heater and plumbing kit	\$ _____

Cab Accessories – Other

_____	CAB ACCESSORY HARNESS & LOWER INTERIOR PANELS KIT See Dealer Parts Department for the correct kit part number. This kit is needed for Base Cabs Only when field installing any of the following accessories; cab enclosure with heat or air conditioning, four-way flasher / turn signal kit, hydraulic bucket positioning, power Bob-Tach kit, rear wiper kit, rotating beacon kit, strobe light kit or radio. Includes Cab Accessory Harness and Lower Interior Panels. Need to order Deluxe Headliner Kit or Deluxe Heater/Air Conditioning Headliner Kit & Cup Holder Kit to finish interior. Est. Install time: 5 hrs.	\$ _____
7167395	CUP HOLDER KIT Lower Interior Panels are required, see Cab Accessory Harness & Lower Interior Panels kit for details. Includes side and front cup holder. Est. Install time: 1 hr.	\$ _____
7227849	CAB SEALS KIT Includes bottom of cab and foot pod area seals. Needed to completely enclose the cab. Est. Install time: 2.5 hrs.	\$ _____

S450 (Tier 4)

BOBCAT SKID STEER LOADER

DEALER INSTALLED ACCESSORIES – ORDER FROM PARTS

PART NUMBER	DESCRIPTION	
<u>Cab Accessories – Other (continued)</u>		
7170782	DELUXE CAB GAS SPRING KIT 3rd gas spring for enclosed cab. Est. Install time: 1 hr.	\$ _____
7156253	DELUXE HEADLINER KIT Includes headliner with light and rear corner cab trim. Est. Install time: 1 hr.	\$ _____
7174171	DELUXE HEATER / AIR CONDITIONING HEADLINER KIT Includes Headliner with interior light, air conditioning/heater vents and rear corner cab trim. Needed to upgrade non-AC/Heater cab to include AC/Heat. Est. Install time: 1 hr.	\$ _____
7196560	FORESTRY WIPER KIT Loader must be equipped with Forestry Door; Reference P/N 7174127 Forestry Door or 7230523 Forestry Applications Kit for detail. Est. Install time: 1 hr	\$ _____
7196560	HEPA FILTER KIT Est. Install time: 0.5 hr	\$ _____
7240148	INTERMITTENT WIPER KIT Includes intermittent wiper switch, cover, harness and tie straps. Kit allows operator to adjust the speed of the wiper to match the operating conditions. Est. Install time: 1 hr.	\$ _____
7234899	REAR WINDOW EXTERNAL REMOVAL KIT Recommended for use with Loader Radio Remote Control kit. Est. Install time: 1 hr.	\$ _____
7225133	REAR WIPER KIT Cab Accessory Harness is required, see Cab Accessory Harness & Lower Interior Panels kit for details. Deluxe Headliner, Lower Interior Panels and Front Door with Wiper are also required. Wiper is activated by a switch on the rear wiper motor. Est. Install time: 4 hrs.	\$ _____
7172897	RESEAL PLUGS KIT Includes plugs to seal cab and frame after the removal of the following: FOPS Kit, Single Point Lift Kit, Four Point Lift Kit, and Backhoe Attachment. Est. Install time: 1 hr.	\$ _____
7172903	WHITE DECAL KIT (CAB TOP) Applied to cab top to maintain a cooler temperature inside the operator’s cab. Est. Install time: 0.5 hr.	\$ _____
<u>Counterweight Kits</u>		
7204315	COUNTERWEIGHT KIT- AXLE Includes axle weights and hardware. When installed on front axles: Increases down force on attachments but does not increase the Rated Operating Capacity (ROC) of the loader. When installed on rear axles: Provides additional Rated Operating Capacity (ROC), see operator’s Manual for ROC increase. Est. Install time: 1.5 hrs.	\$ _____

S450 (Tier 4)

BOBCAT SKID STEER LOADER

PART NUMBER DEALER INSTALLED ACCESSORIES – ORDER FROM PARTS DESCRIPTION

Electrical Accessories

_____	ATTACHMENT CONTROL KIT	\$ _____
	For complete listing of Attachment Control Kits, P/N's and Descriptions – Refer to Attachments Section of the Price Pages.	
7169103	CAB ACCESSORY ADAPTER HARNESS	\$ _____
	For Loaders without Cab Accessory Harness. Needed for Strobe, Beacon and Four-Way Flasher. Est. Install time: 0.5 hr.	
7128338	FOUR-WAY FLASHER / TURN SIGNAL KIT	\$ _____
	Cab Accessory Harness or Cab Accessory Adapter Harness is required; Reference Cab Accessory Harness & Lower Interior Panels kit or Cab Accessory Adapter Harness for details. Est. Install time: 1 hr.	
7129299	ROTATING BEACON KIT.....	\$ _____
	Cab Accessory Harness or Cab Accessory Adapter Harness is required; Reference Cab Accessory Harness & Lower Interior Panels kit or Cab Accessory Adapter Harness for details. Est. Install time: 1 hr.	
7129301	STROBE LIGHT KIT, AMBER	\$ _____
	Cab Accessory Harness or Cab Accessory Adapter Harness is required; Reference Cab Accessory Harness & Lower Interior Panels kit or Cab Accessory Adapter Harness for details. Est. Install time: 1 hr.	

Engine Accessories

7237289	ENGINE BLOCK HEATER	\$ _____
	Est. Install time: 0.25 hrs.	

Hydraulic Accessories

7254136	HYDRAULIC BUCKET POSITIONING KIT.....	\$ _____
	Bucket Positioning helps the operator keep the same tilt position of the load during lifting. Cab Accessory Harness is required, see Cab Accessory Harness & Lower Interior Panels kit for details. Includes on/off switch. Est. Install time:	
7249869	REAR AUXILIARY HYDRAULIC KIT	\$ _____
	Provides a flow of 8.5 GPM. Est. Install time: 10 hrs.	

Instrumentation

7213928	DELUXE INSTRUMENT PANEL WITH KEYLESS START	\$ _____
	Includes keyless start, feature lockouts, help screens, clock, job clock, system diagnostic capability and more. Est. Install time: 1 hr.	
7213929	KEYLESS START PANEL KIT	\$ _____
	Allows operator to start the loader by entering a reprogrammable number code. Est. Install time: 1 hr.	

Lift Kits

7241506	FOUR-POINT LIFT KIT.....	\$ _____
	Cannot be used on loaders equipped with Backhoe Mounting Kit. Est. Install time:	
7241548	SINGLE POINT LIFT KIT	\$ _____
	Est. Install time:	

Loader Guard Kits

7251551	CROSS MEMBER TUBE LINE SHIELD KIT.....	\$ _____
7129293	FOPS KIT.....	\$ _____
	Additional shield assembly for cab top. Meets ISO 3449, Level II Requirements. Est. Install time: 1 hr.	
7239159	REAR WORK LIGHTS GUARD KIT	\$ _____
	Est. Install time: 0.5 hr.	
7174129	FRONT WORK LIGHTS GUARD KIT	\$ _____
	Est. Install time: 0.5 hr.	
7248293	TILT CYLINDER SHIELD KIT.....	\$ _____
	Est. Install time: 0.5 hr.	

S450 (Tier 4)

BOBCAT SKID STEER LOADER

DEALER INSTALLED ACCESSORIES – ORDER FROM PARTS

PART NUMBER	DESCRIPTION	PRICE
<u>Power Bob-Tach Kits</u>		
7254137	POWER BOB-TACH KIT AND PLUMBING KIT Cab Accessory Harness is required, see Cab Accessory Harness & Lower Interior Panels kit for details. Must also order Power Bob-Tach Plumbing Kit. Est. Install time: to install Power Bob-Tach Kit and Plumbing Kit	\$ _____
<u>Radio</u>		
6988435	RADIO KIT..... Includes weatherproof AM/FM/NOAA Weather Band Radio, Radio Mounting Bracket, Speakers, Antenna, and Installation Hardware. Works with MP3 or other portable music player. Cab Accessory Harness is required, see Cab Accessory Harness & Lower Interior Panels kit for details. Est. Install time: 3 hrs.	\$ _____
6676108	RADIO HEADPHONES	\$ _____
<u>Remote Control Kits</u>		
7185234	LOADER RADIO REMOTE CONTROL KIT Allows an operator to start/stop the engine, operate the drive system and control the lift, tilt and auxiliary hydraulic functions remotely using a Radio Transmitter. The operator must maintain visual contact with the loader and the loader's path of travel. Available for loaders equipped with Selectable Joystick Controls (SJC) or All Wheel Steer Loaders. Requires version 57 software or newer. Est. Install time: 0.5 hr.	\$ _____
6986516	LOADER RADIO REMOTE OPERATOR TRAINING KIT.....	\$ _____
<u>Reversing Fan Kits</u>		
7304960	REVERSING FAN KIT Temporarily reverses cooling fan direction to blow dust and small debris from the radiator and rear screens. Includes three operating modes: Automatic, Momentary and OFF. Cab Accessory Harness is required, see Cab Accessory Harness & Lower Interior Panels kit for details. Est. Install Time: 3 hrs.	\$ _____
<u>Ride Control Kits</u>		
7246068	RIDE CONTROL KIT..... Provides a smoother ride by cushioning the lift arms when traveling over rough terrain. Est. Install time:	\$ _____
<u>Seats & Seat Belts</u>		
6703640	SEAT BELT KIT, 3" (STANDARD SEAT)..... For use with Standard Seat only. Includes 3" lap belt. Est. Install time: 0.5 hr.	\$ _____
7129303	SEAT BELT KIT, 3" (SUSPENSION SEAT) For use with Suspension Seat only. Includes 3" retractable lap belt. Est. Install time: 0.5 hr.	\$ _____
7128405	SEAT BELT KIT, 3-POINT For use with Suspension Seat only. Includes 2" shoulder belt and 2" lap belt. Est. Install time: 0.5 hr.	\$ _____
7169480	SEAT BELT KIT-3", 3-POINT..... For use with Suspension Seat only. Includes 2" shoulder belt and 3" lap belt. Est. Install time: 0.5 hr.	\$ _____
7128524	SUSPENSION SEAT Vinyl material. Must also order a seat belt kit unless previously equipped with suspension seat. Est. Install time: 1 hr.	\$ _____
7183366	SUSPENSION SEAT, AIR RIDE Vinyl material. Must also order a seat belt kit unless previously equipped with suspension seat. Est. Install time: 1 hr.	\$ _____

S450 (Tier 4)

BOBCAT SKID STEER LOADER

DEALER INSTALLED ACCESSORIES – ORDER FROM PARTS

PART NUMBER	DESCRIPTION	PRICE
<u>Sound Reduction Kits</u>		
7254140	SOUND REDUCTION KIT Includes insulating materials and a hydraulic muffler to reduce sound levels at the operator's ear and for bystanders. Est. Install time: 2 hrs.	\$ _____
7252091	DELUXE SOUND KIT FOR STANDARD OR ACS CONTROLS Includes foot pod insulating materials to reduce sound levels at the operator's ear. Est. Install time: 1 hr.	\$ _____
7252092	DELUXE SOUND KIT FOR SJC CONTROLS Includes foot pod insulating materials to reduce sound levels at the operator's ear. Est. Install time: 1 hr.	\$ _____
<u>Training Kits</u>		
6901726	BOBCAT LOADER OPERATOR TRAINING KIT	\$ _____
6900641	BOBCAT LOADER SERVICE TRAINING KIT	\$ _____
6904762	BOBCAT OPERATOR SAFETY DVD Includes all of the 10-minute operator safety videos in both English and Spanish.	\$ _____
<u>Other Accessories</u>		
7129307	FIRE EXTINGUISHER KIT Est. Install time: 0.5 hr.	\$ _____
7257869	LOADER WEIGHLOG SCALE KIT Measures hydraulic pressure at a specific position during the lifting cycle for either static or dynamic weighing. The weighlog kit is not a certified scale. Please see Bobcat Parts Sales & Merchandising Manual for additional details. Est. Install time: 4 hrs.	\$ _____
7023550	LOCKING FUEL CAP Includes a Black Locking Fuel Cap which is keyed the same as the loader. Key is Not included. Additional locking fuel cap options are available through parts.	\$ _____
7128403	SECURITY LOCKS KIT Est. Install time: 0.5 h	\$ _____

S550/S570/S590 (Tier 4) BOBCAT SKID STEER LOADER



STANDARD EQUIPMENT

61.0 HP Turbo Tier 4 Diesel Engine (S550/S570)
 66.0 HP Turbo Tier 4 Diesel Engine (S590)
 Auxiliary Hydraulics: Variable Flow
 Backup Alarm
 Bob-Tach
 Bobcat Interlock Control System (BICS™)
 Controls: Bobcat Standard
 Cylinder Cushioning – Lift, Tilt
 Engine/Hydraulic Systems Shutdown
 Glow Plugs (Automatically Activated)
 Horn
 Instrumentation: Engine Temperature & Fuel Gauges,
 Hourmeter, RPM and Warning Lights
 Lift Arm Support
 Lift Path: Radius (S550), Vertical (S570/S590)

Lights, Front & Rear
 Operator Cab

- Includes: Adjustable Suspension Seat, Top & Rear Windows, Parking Brake, Seat Bar & Seat Belt
- Roll Over Protective Structure (ROPS) meets SAE-J1040 & ISO 3471
- Falling Object Protective Structure (FOPS) meets SAE-J1043 & ISO 3449, Level I; (Level II is available through Bobcat Parts)

Spark Arrestor Exhaust System
 Tires: 10-16.5, 8 PR, Bobcat Standard Duty (S550/S570)
 Tires: 31 x 12-16.5, 10 PR, Bobcat Heavy Duty (S590)

QUICK SPECS

	S550	S570	S590
Rated Operating Capacity	1,750 lbs.	1,950 lbs.	2,100 lbs.
Engine Model	2.4L Bobcat Engine	2.4L Bobcat Engine	2.4L Bobcat Engine
Engine Fuel.....	Diesel	Diesel	Diesel
Engine Cooling.....	Liquid	Liquid	Liquid
Horsepower.....	61.0	61.0	66.0
Hydraulic Pump Capacity-Standard Flow	17.1 GPM	17.1 GPM	17.1 GPM
Hydraulic Pump Capacity-High Flow (Optional).....	26.7 GPM	26.7 GPM	26.7 GPM
Travel Speed.....	7.4 MPH	7.4 MPH	7.4 MPH
Travel Speed – 2 Speed Option	7.4/11.0 MPH	7.4/11.0 MPH	7.4/11.0 MPH
Operating Weight	6,213 lbs.	6,480 lbs.	6,593 lbs.
Shipping Weight.....	5,495 lbs.	5,812 lbs.	5,937 lbs.
Cab Height.....	77.8"	77.8"	77.8"
Width (w/out Attachment).....	64.7"	64.7"	65.2"
Length (w/out Attachment).....	104.6"	104.6"	104.6"
Wheelbase.....	42.6"	42.6"	42.6"
Reach at Maximum Height.....	17.0"	32.6"	32.6"
Height to Hinge Pin	114.5"	119.0"	119.0"

S550/S570/S590 (Tier 4) BOBCAT SKID STEER LOADER

PART NUMBER	SKID STEER LOADER	SLP IN US \$
-------------	-------------------	--------------

M0253	S550 SKID STEER LOADER (EQUIPPED WITH TIER 4 ENGINE)	\$39,416
M0259	S570 SKID STEER LOADER (EQUIPPED WITH TIER 4 ENGINE)	\$41,380
M0261	S590 SKID STEER LOADER (EQUIPPED WITH TIER 4 ENGINE)	\$43,725

PART NUMBER	AIR CONDITIONED/HEATED CAB PACKAGES	SLP IN US \$
-------------	-------------------------------------	--------------

M_-P01-A91	A91 OPTION PACKAGE (S550 & S570 ONLY)	\$10,658
M_-P01-A71	A71 OPTION PACKAGE (S550 & S570 ONLY)	\$6,669
M_-P01-A51	A51 OPTION PACKAGE	\$5,133

<u>A51</u>	<u>A71</u>	<u>A91</u>
Enclosed Cab with AC/Heat Cab Accessories Package* Power Bob-Tach	Enclosed Cab with AC/Heat Cab Accessories Package* Power Bob-Tach Sound Reduction Deluxe Instrument Panel with Keyless Start Attachment Control Kit	Enclosed Cab with AC/Heat Cab Accessories Package* Power Bob-Tach Sound Reduction Deluxe Instrument Panel with Keyless Start Attachment Control Kit High Flow Hydraulics Two Speed w/ SAPR Brake 3-Point Seat Belt Hydraulic Bucket Positioning

PART NUMBER	HEATED CAB PACKAGES	SLP IN US \$
-------------	---------------------	--------------

M_-P01-H51	H51 OPTION PACKAGE	\$3,562
------------	--------------------------	---------

<u>H51</u>
Enclosed Cab with Heat Cab Accessories Package* Power Bob-Tach

PART NUMBER	OPEN CAB PACKAGES	SLP IN US \$
-------------	-------------------	--------------

M_-P01-O51	O51 OPTION PACKAGE	\$1,331
------------	--------------------------	---------

<u>O51</u>
Cab Accessories Package* Power Bob-Tach

**Cab Accessories Package: Deluxe Headliner with Dome Light, Cab Accessory Harness, Power Port, Lower Interior Panels with Storage Compartments and Cup Holder.*

S550/S570/S590 (Tier 4) BOBCAT SKID STEER LOADER

PART NUMBER	DESCRIPTION	FACTORY INSTALLED OPTIONS	SLP IN US \$
-------------	-------------	---------------------------	--------------

Controls

M__-R01-C03	ADVANCED CONTROL SYSTEM (ACS) [DISCONTINUED] ACS allows operator to select either hand or foot control of lift and tilt functions. <i>*The Cab Accessories Package is required.</i>		\$2,110
M__-R01-C04	SELECTABLE JOYSTICK CONTROL (SJC) Features include: Selectable patterns (ISO or H-Pattern), Auto Idle, Horsepower Management, Speed Management, Drive Response, Drift Compensation and Foot Pedal for Engine Speed Control. <i>*The Cab Accessories Package is required.</i>		\$795

Individual Options Requirements

NOTE: *The following options may require additional equipment, see details below. If the required equipment is not included in a Cab Package the Bobcat ordering systems will automatically add the equipment to the order.*

CAB ACCESSORIES PACKAGE

Required for Reversing Fan, Hydraulic Bucket Positioning, Automatic Ride Control, ACS, and SJC. The Cab Accessories Package is included in all Cab Packages. If a Cab Package is not ordered, you must add **\$495**

7-PIN ATTACHMENT CONTROL KIT

Required for High Flow Hydraulics. The 7-Pin Attachment Control Kit is included in the A71 and A91 Cab Packages, if one of those Cab Packages is not ordered, you must add **\$269**

Individual Options

M__-R03-C03	HIGH FLOW HYDRAULICS Provides 26.7 GPM and 3500 PSI for attachment operation. The 7 pin attachment control kit is required. See NOTE above.		\$1,875
M__-R04-C02	TWO SPEED Includes 2-speed motors and 3-Point Seat Belt Low Travel Speed 7.4 MPH, High Travel Speed 11.0 MPH		\$1,723
M__-R11-C02	HYDRAULIC BUCKET POSITIONING Bucket Positioning helps the operator keep the same tilt of the load during lifting. Includes On/Off switch. The Cab Accessories Package is required. See NOTE above.		\$558
M__-R05-C11	CLOTH HEATED AIR RIDE SUSPENSION SEAT Includes Heat on/off switch on the back of the seat. Must order an A or O cab package.		\$475
M__-R26-C02	RADIO Must order an A, H or O cab package. Works with MP3 or other portable music player. Includes weatherproof AM/FM/NOAA Weather Band Radio, Speakers, and Antenna.		\$498
M__-R32-C02	REVERSING FAN Temporarily reverses the cooling fan direction to blow dust and small debris from the radiator and rear screens. Includes three operating modes: Automatic, Momentary, & OFF. The Cab Accessories Package is required. See NOTE above.		\$616
M__-R33-C02	AUTOMATIC RIDE CONTROL Automatically activates by detecting increased hydraulic lift arm pressure when the loader is carrying material. Includes on/off switch. The Cab Accessories Package is required. See NOTE above.		\$741

S550/S570/S590 (Tier 4)

BOBCAT SKID STEER LOADER

PART NUMBER	DESCRIPTION	FACTORY INSTALLED OPTIONS	SLP IN US \$
-------------	-------------	---------------------------	--------------

Tires (S550 & S570)

Set of 4 Tires in Place of Base Equipment

M__-R09-C02	10-16.5, 10 PR, BOBCAT HEAVY DUTY TIRES	\$269
	Loader width 64.7"	
M__-R09-C03	10-16.5, 10 PR, BOBCAT HEAVY DUTY TIRES OFFSET	\$314
	Loader width 59.5"	
M__-R09-C04	10-16.5, 10 PR, BOBCAT SEVERE DUTY TIRES [DISCONTINUED].....	\$1,011
	Loader width 64.3"	
M__-R09-C05	10-16.5, 10 PR, BOBCAT SEVERE DUTY - POLY FILL TIRES [DISCONTINUED].....	\$1,681
	Loader width 64.3"	
M__-R09-C06	31 x 12-16.5, 10 PR, BOBCAT HEAVY DUTY WIDE FLOTATION TIRES	\$634
	Loader width 65.2"	

Tires (S590)

Set of 4 Tires in Place of Base Equipment

M0261-R09-C02	10-16.5, 10 PR, BOBCAT HEAVY DUTY TIRES	\$0
	Loader width 64.7"	
M0261-R09-C03	10-16.5, 10 PR, BOBCAT HEAVY DUTY TIRES OFFSET	\$58
	Loader width 59.5"	
M0261-R09-C04	10-16.5, 10 PR, BOBCAT SEVERE DUTY TIRES	\$749
	Loader width 64.3"	
M0261-R09-C05	10-16.5, 10 PR, BOBCAT SEVERE DUTY - POLY FILL TIRES	\$1,418
	Loader width 64.3"	

S595 (Tier 4) BOBCAT SKID STEER LOADER



STANDARD EQUIPMENT

- | | |
|---|---|
| <p>74.0 HP Turbo Tier 4 Diesel Engine
 2-Speed Travel
 Auxiliary Hydraulics: Variable Flow
 Backup Alarm
 Bob-Tach
 Bobcat Interlock Control System (BICS™)
 Controls: Bobcat Standard
 Cylinder Cushioning – Lift, Tilt
 Engine/Hydraulic Systems Shutdown
 Glow Plugs (Automatically Activated)
 Horn
 Instrumentation: Engine Temperature & Fuel Gauges,
 Hourmeter, RPM and Warning Lights
 Lift Arm Support
 Lift Path: Vertical</p> | <p>Lights, Front & Rear
 Operator Cab</p> <ul style="list-style-type: none"> • Includes: Adjustable Suspension Seat, Top & Rear Windows, Parking Brake, Seat Bar & 3 Point Seat Belt • Roll Over Protective Structure (ROPS) meets SAE-J1040 & ISO 3471 • Falling Object Protective Structure (FOPS) meets SAE-J1043 & ISO 3449, Level I; (Level II is available through Bobcat Parts) <p>Spark Arrestor Exhaust System
 Tires: 31 x 10-16.5, 10 PR, Bobcat Heavy Duty</p> |
|---|---|

QUICK SPECS

S595	
Rated Operating Capacity	2,200 lbs.
Engine Model	2.4L Bobcat Engine
Engine Fuel.....	Diesel
Engine Cooling	Liquid
Horsepower.....	74.0
Hydraulic Pump Capacity-Standard Flow	17.1 GPM
Hydraulic Pump Capacity-High Flow (Optional).....	26.7 GPM
Travel Speed (Low Range).....	7.4 MPH
Travel Speed (High Range)	7.4/11.0 MPH
Operating Weight	6,793 lbs.
Shipping Weight	6,137 lbs.
Cab Height.....	77.8"
Width (w/out Attachment).....	65.2"
Length (w/out Attachment).....	104.6"
Wheelbase.....	42.6"
Reach at Maximum Height.....	32.6"
Height to Hinge Pin	119.0"

S595 (Tier 4) BOBCAT SKID STEER LOADER

PART NUMBER	SKID STEER LOADER	SLP IN US \$
-------------	-------------------	--------------

M0247	S595 SKID STEER LOADER (EQUIPPED WITH TIER 4 ENGINE)	\$46,252
-------	--	----------

PART NUMBER	AIR CONDITIONED/HEATED CAB PACKAGES	SLP IN US \$
-------------	-------------------------------------	--------------

M_-P01-A91	A91 OPTION PACKAGE	\$8,873
M_-P01-A71	A71 OPTION PACKAGE	\$6,669
M_-P01-A51	A51 OPTION PACKAGE	\$5,133

A51
 Enclosed Cab with AC/Heat
 Cab Accessories Package*
 Power Bob-Tach

A71
 Enclosed Cab with AC/Heat
 Cab Accessories Package*
 Power Bob-Tach
 Sound Reduction
 Deluxe Instrument Panel with
 Keyless Start
 Attachment Control Kit

A91
 Enclosed Cab with AC/Heat
 Cab Accessories Package*
 Power Bob-Tach
 Sound Reduction
 Deluxe Instrument Panel with
 Keyless Start
 Attachment Control Kit
 High Flow Hydraulics
 Two Speed with SAPR Brake
 3-Point Seat Belt
 Hydraulic Bucket Positioning

PART NUMBER	HEATED CAB PACKAGES	SLP IN US \$
-------------	---------------------	--------------

M_-P01-H51	H51 OPTION PACKAGE	\$3,562
------------	--------------------------	---------

H51
 Enclosed Cab with Heat
 Cab Accessories Package*
 Power Bob-Tach

PART NUMBER	OPEN CAB PACKAGES	SLP IN US \$
-------------	-------------------	--------------

M_-P01-O51	O51 OPTION PACKAGE	\$1,331
------------	--------------------------	---------

O51
 Cab Accessories Package*
 Power Bob-Tach

**Cab Accessories Package: Deluxe Headliner with Dome Light, Cab Accessory Harness, Power Port, Lower Interior Panels with Storage Compartments and Cup Holder.*

\$595 (Tier 4)

BOBCAT SKID STEER LOADER

PART NUMBER	DESCRIPTION	FACTORY INSTALLED OPTIONS	SLP IN US \$
-------------	-------------	---------------------------	--------------

Controls

M__-R01-C03	ADVANCED CONTROL SYSTEM (ACS) [DISCONTINUED] ACS allows operator to select either hand or foot control of lift and tilt functions. <i>*The Cab Accessories Package is required.</i>		\$2,110
M__-R01-C04	SELECTABLE JOYSTICK CONTROL (SJC) Features include: Selectable patterns (ISO or H-Pattern), Auto Idle, Horsepower Management, Speed Management, Drive Response, Drift Compensation and Foot Pedal for Engine Speed Control. <i>*The Cab Accessories Package is required.</i>		\$795

Individual Options Requirements

NOTE: *The following options may require additional equipment, see details below. If the required equipment is not included in a Cab Package the Bobcat ordering systems will automatically add the equipment to the order.*

CAB ACCESSORIES PACKAGE

Required for Reversing Fan, Hydraulic Bucket Positioning, Automatic Ride Control, ACS and SJC. The Cab Accessories Package is included in all Cab Packages. If a Cab Package is not ordered, you must add **\$495**

7-PIN ATTACHMENT CONTROL KIT

Required for High Flow Hydraulics. The 7-Pin Attachment Control Kit is included in the A71, A91, H71 and O71 Cab Packages, if one of those Cab Packages is not ordered, you must add **\$245**

Individual Options

M__-R03-C03	HIGH FLOW HYDRAULICS Provides 26.7 GPM and 3500 PSI for attachment operation. The 7 pin attachment control kit is required. See NOTE above.		\$1,875
M__-R11-C02	HYDRAULIC BUCKET POSITIONING Bucket Positioning helps the operator keep the same tilt of the load during lifting. Includes On/Off switch. The Cab Accessories Package is required. See NOTE above.		\$558
M__-R05-C11	CLOTH HEATED AIR RIDE SUSPENSION SEAT Includes Heat on/off switch on the back of the seat. Must order an A or O cab package.		\$475
M__-R26-C02	RADIO Must order an A, H or O cab package. Works with MP3 or other portable music player. Includes weatherproof AM/FM/NOAA Weather Band Radio, Speakers, and Antenna.		\$498
M__-R32-C02	REVERSING FAN Temporarily reverses the cooling fan direction to blow dust and small debris from the radiator and rear screens. Includes three operating modes: Automatic, Momentary, & OFF. The Cab Accessories Package is required. See NOTE above.		\$616
M__-R33-C02	AUTOMATIC RIDE CONTROL Automatically activates by detecting increased hydraulic lift arm pressure when the loader is carrying material. Includes on/off switch. The Cab Accessories Package is required. See NOTE above.		\$741

S595 (Tier 4)

BOBCAT SKID STEER LOADER

PART NUMBER	DESCRIPTION	FACTORY INSTALLED OPTIONS	SLP IN US \$
-------------	-------------	---------------------------	--------------

Tires (S595)

Set of 4 Tires in Place of Base Equipment

M0247-R09-C02	10-16.5, 10 PR, BOBCAT HEAVY DUTY TIRES Loader width 64.7"	\$0
M0247-R09-C03	10-16.5, 10 PR, BOBCAT HEAVY DUTY TIRES OFFSET Loader width 59.5"	\$58
M0247-R09-C04	10-16.5, 10 PR, BOBCAT SEVERE DUTY TIRES [DISCONTINUED] Loader width 64.3"	\$749
M0247-R09-C05	10-16.5, 10 PR, BOBCAT SEVERE DUTY - POLY FILL TIRES [DISCONTINUED] Loader width 64.3"	\$1,418

S510/S530/S550/S570/S590/S595 (Tier 4)

BOBCAT SKID STEER LOADER

PART NUMBER	DEALER INSTALLED ACCESSORIES – ORDER FROM SALES DESCRIPTION	SLP IN US \$
<i>Spare Wheel and Tire Assemblies</i>		
7210487	10-16.5, 8 PR, BOBCAT STANDARD DUTY TIRE - LEFT Spare Wheel and Tire Assembly. S510/S530/S550/S570 Loader Width 64.7"	\$234
7210488	10-16.5, 8 PR, BOBCAT STANDARD DUTY TIRE - RIGHT..... Spare Wheel and Tire Assembly. S510/S530/S550/S570 Loader Width 64.7"	\$234
7109588	10-16.5, 10 PR, BOBCAT HEAVY DUTY TIRE - LEFT Spare Wheel and Tire Assembly. S510/S530/S550/S570/S590/S595 Loader Width 64.7"	\$303
7109589	10-16.5, 10 PR, BOBCAT HEAVY DUTY TIRE - RIGHT Spare Wheel and Tire Assembly. S510/S530/S550/S570/S590/S595 Loader Width 64.7"	\$303
7109592	10-16.5, 10 PR, BOBCAT HEAVY DUTY TIRE-OFFSET - LEFT..... Spare Wheel and Tire Assembly. S510/S530/S550/S570/S590/S595 Loader Width 59.5"	\$314
7109593	10-16.5, 10 PR, BOBCAT HEAVY DUTY TIRE-OFFSET - RIGHT Spare Wheel and Tire Assembly. S510/S530/S550/S570/S590/S595 Loader Width 59.5"	\$314
7109596	10-16.5, 10 PR, BOBCAT SEVERE DUTY TIRE..... Spare Wheel and Tire Assembly. S510/S530/S550/S570/S590/S595 Loader Width 64.3"	\$493
7109604	10-16.5, 10 PR, BOBCAT SEVERE DUTY TIRE-POLY-FILL..... Spare Wheel and Tire Assembly. S510/S530/S550/S570/S590/S595 Loader Width 64.3"	\$658
7211383	31 x 12-16.5, 10 PR, BOBCAT HEAVY DUTY WIDE FLOTATION TIRE ASSY - LEFT.. Spare Wheel and Tire Assembly. S510/S530/S550/S570/S590/S595 Loader Width 65.2"	\$452
7211384	31 x 12-16.5, 10 PR, BOBCAT HEAVY DUTY WIDE FLOTATION TIRE ASSY - RIGHT Spare Wheel and Tire Assembly. S510/S530/S550/S570/S590/S595 Loader Width 65.2"	\$452

S510/S530/S550/S570/S590/S595 (Tier 4)
BOBCAT SKID STEER LOADERS

PART NUMBER	DEALER INSTALLED ACCESSORIES – ORDER FROM PARTS DESCRIPTION
-------------	---

Part numbers for kits in this section are current as of October 2016 and pertain to current loader models as of that date. To ensure having the correct Part Number for a Dealer Installed Accessory, obtain the loader model and serial number and check with Dealer Parts Department. For the most current Dealer Installed Accessories pricing, refer to BobQuote or Dealer Parts Department.

Cab Accessories – Enclosures, Doors, Windows

7128393	CAB ENCLOSURE DOOR KIT \$ _____ Cab Accessory Harness is required, see Cab Accessory Harness & Lower Interior Panels kit for details. Includes Front Door with Sensor Switch and Wiper/Washer. Must also order Side Windows Kit and Cab Seals Kit to completely enclose cab. Est. Install time: 3.5 hrs.
7186723	FOPS WINDOW KIT \$ _____ Est. Install time: 10 min.
7174127	FORESTRY DOOR KIT..... \$ _____ Cab Accessory Harness is required, see Cab Accessory Harness & Lower Interior Panels kit for details. Est. Install time: 2 hrs.
7182335	SLIDING SIDE LEXAN WINDOWS KIT \$ _____ Includes 2 Sliding Side Lexan Windows. Est. Install time: 1 hr.
7128342	SLIDING SIDE WINDOWS KIT..... \$ _____ Includes 2 Sliding Side Windows. Must also order Cab Enclosure Door Kit to completely enclose cab. Est. Install time: 1 hr.
7128395	SPECIAL APPLICATIONS POLYCARBONATE DOOR KIT..... \$ _____ Provides added operator protection during some attachment applications. Includes ½" thick polycarbonate front door. Must order a Side Windows Kit, Cab Seals Kit and Special Applications Rear Window to completely enclose cab. Est. Install time: 3 hrs.
7214673	SPECIAL APPLICATIONS POLYCARBONATE REAR WINDOW KIT..... \$ _____ Provides added operator protection during some attachment applications. Includes ½" thick polycarbonate rear window. Must order a Side Windows Kit, Cab Seals Kit and Special Applications Front Door to completely enclose cab. Est. Install time: 0.5 hr.

Cab Accessories – Heat and Air Conditioning

7236389	AIR CONDITIONING KIT (S550/S570/S590/S595) \$ _____ Loader must be equipped with Cab Enclosure with Heater. Est. Install time: 8 hrs.
7128484	HEATER KIT \$ _____ Cab Accessory Harness is required, see Cab Accessory Harness & Lower Interior Panels kit for details. Must also order heater plumbing kit. Est. Install time: 5 hrs. to install heater and plumbing kit
7236388	HEATER PLUMBING KIT \$ _____ Est. Install time: 5 hrs. to install heater and plumbing kit
7200657	LOWER AIR DUCT KIT \$ _____ Includes two additional air ducts to direct air flow towards the foot well and lower cab door area. Loader must be equipped with Cab Enclosure and Heater or Air Conditioning. Est. Install time: 1-3 hrs. (depends on loader model and s/n)

Cab Accessories – Other

_____	CAB ACCESSORY HARNESS & LOWER INTERIOR PANELS KIT \$ _____ See Dealer Parts Department for the correct kit part number. This kit is needed for Base Cabs Only when field installing any of the following accessories; cab enclosure with heat or air conditioning, four-way flasher / turn signal kit, hydraulic bucket positioning, power Bob-Tach kit, rear wiper kit, rotating beacon kit, strobe light kit or radio. Includes Cab Accessory Harness and Lower Interior Panels. Need to order Deluxe Headliner Kit or Deluxe Heater/Air Conditioning Headliner Kit & Cup Holder Kit to finish interior. Est. Install time: 5 hrs.
7167395	CUP HOLDER KIT..... \$ _____ Lower Interior Panels are required, see Cab Accessory Harness & Lower Interior Panels kit for details. Includes side and front cup holder. Est. Install time: 1 hr.
7227849	CAB SEALS KIT..... \$ _____ Includes bottom of cab and foot pod area seals. Needed to completely enclose the cab. Est. Install time: 2.5 hrs.

S510/S530/S550/S570/S590/S595 (Tier 4)

BOBCAT SKID STEER LOADERS

PART NUMBER DEALER INSTALLED ACCESSORIES – ORDER FROM PARTS DESCRIPTION

Cab Accessories – Other (continued)

7170782	DELUXE CAB GAS SPRING KIT 3rd gas spring for enclosed cab. Est. Install time: 1 hr.	\$ _____
7156253	DELUXE HEADLINER KIT Includes headliner with light and rear corner cab trim. Est. Install time: 1 hr.	\$ _____
7174171	DELUXE HEATER / AIR CONDITIONING HEADLINER KIT Includes Headliner with interior light, air conditioning/heater vents and rear corner cab trim. Needed to upgrade non-AC/Heater cab to include AC/Heat. Est. Install time: 1 hr.	\$ _____
7196560	FORESTRY WIPER KIT Loader must be equipped with Forestry Door; Reference P/N 7174127 Forestry Door or 7230523 Forestry Applications Kit for detail. Est. Install time: 1 hr.	\$ _____
7238900	HEPA FILTER KIT Est. Install time: 0.5 hr.	\$ _____
7240148	INTERMITTENT WIPER KIT Includes intermittent wiper switch, cover, harness and tie straps. Kit allows operator to adjust the speed of the wiper to match the operating conditions. Est. Install time: 1 hr.	\$ _____
6725946	REAR WINDOW EXTERNAL REMOVAL KIT Recommended for use with Loader Radio Remote Control kit. Est. Install time: 1 hr.	\$ _____
7225133	REAR WIPER KIT Cab Accessory Harness is required, see Cab Accessory Harness & Lower Interior Panels kit for details. Deluxe Headliner, Lower Interior Panels and Front Door with Wiper are also required. Wiper is activated by a switch on the rear wiper motor. Est. Install time: 4 hrs.	\$ _____
7172897	RESEAL PLUGS KIT Includes plugs to seal cab and frame after the removal of the following: FOPS Kit, Single Point Lift Kit, Four Point Lift Kit, and Backhoe Attachment. Est. Install time: 1 hr.	\$ _____
7172903	WHITE DECAL KIT (CAB TOP) Applied to cab top to maintain a cooler temperature inside the operator's cab. Est. Install time: 0.5 hr.	\$ _____

Counterweight Kits

7204315	COUNTERWEIGHT KIT- FRONT AXLE Includes axle weights and hardware. Increases down force on attachments. It does not increase the Rated Operating Capacity (ROC) of the loader. Est. Install time: 1.5 hrs.	\$ _____
7129250	COUNTERWEIGHT KIT, 200 LBS (S510/S530/S550/S570/S590) Includes (4) 50 lb weights that bolt to rear uprights of loader. See operator's manual for ROC increase. Not compatible with the Quick-Tach Water Kit or Rear Stabilizers. Est. Install time: 1 hr.	\$ _____

S510/S530/S550/S570/S590/S595 (Tier 4)

BOBCAT SKID STEER LOADERS

PART NUMBER	DEALER INSTALLED ACCESSORIES – ORDER FROM PARTS DESCRIPTION
-------------	---

Electrical Accessories

	ATTACHMENT CONTROL KIT \$ _____ For complete listing of Attachment Control Kits, P/N's and Descriptions – Refer to Attachments Section of the Price Pages.
7169103	CAB ACCESSORY ADAPTER HARNESS \$ _____ For Loaders without Cab Accessory Harness. Needed for Strobe, Beacon and Four-Way Flasher. Est. Install time: 0.5 hr.
7128338	FOUR-WAY FLASHER / TURN SIGNAL KIT \$ _____ Cab Accessory Harness or Cab Accessory Adapter Harness is required; Reference Cab Accessory Harness & Lower Interior Panels kit or Cab Accessory Adapter Harness for details. Est. Install time: 1 hr.
7129299	ROTATING BEACON KIT \$ _____ Cab Accessory Harness or Cab Accessory Adapter Harness is required; Reference Cab Accessory Harness & Lower Interior Panels kit or Cab Accessory Adapter Harness for details. Est. Install time: 1 hr.
7129301	STROBE LIGHT KIT, AMBER \$ _____ Cab Accessory Harness or Cab Accessory Adapter Harness is required; Reference Cab Accessory Harness & Lower Interior Panels kit or Cab Accessory Adapter Harness for details. Est. Install time: 1 hr.
7256348	SIDE LIGHT KIT \$ _____ Includes two LED side lights Est. Install time: 0.5 hr.

Engine Accessories

7239665	ENGINE BLOCK HEATER \$ _____ Est. Install time: 0.25 hrs.
----------------	---

Hydraulic Accessories

7129447	HYDRAULIC BUCKET POSITIONING KIT (S510/S550) \$ _____ Bucket Positioning helps the operator keep the same tilt position of the load during lifting. Cab Accessory Harness is required, see Cab Accessory Harness & Lower Interior Panels kit for details. Includes on/off switch. Est. Install time: 3 hrs.
7128442	HYDRAULIC BUCKET POSITIONING KIT (S530/S570/S590/S595) \$ _____ Bucket Positioning helps the operator keep the same tilt position of the load during lifting. Cab Accessory Harness is required, see Cab Accessory Harness & Lower Interior Panels kit for details. Includes on/off switch. Est. Install time: 3 hrs.
7208031	LIFT CYLINDER CUSHION PISTON (S530/S570/S590/S595) \$ _____ Softens the contact between the lift arms and mainframe reducing noise. Must also order Piston Nut p/n 6810539.
7229294	REAR AUXILIARY HYDRAULIC KIT \$ _____ Provides a flow of 8.5 GPM. Est. Install time: 10 hrs.

Instrumentation

7213928	DELUXE INSTRUMENT PANEL WITH KEYLESS START \$ _____ Includes keyless start, feature lockouts, help screens, clock, job clock, system diagnostic capability and more. Est. Install time: 1 hr.
7213929	KEYLESS START PANEL KIT \$ _____ Allows operator to start the loader by entering a reprogrammable number code. Est. Install time: 1 hr.

Lift Kits

7161980	FOUR-POINT LIFT KIT (S510/S550) \$ _____ Cannot be used on loaders equipped with Backhoe Mounting Kit. Est. Install time: 2 hrs.
7161979	FOUR-POINT LIFT KIT (S530/S570/S590/S595) \$ _____ Cannot be used on loaders equipped with Backhoe Mounting Kit. Est. Install time: 2 hrs.
7193579	SINGLE POINT LIFT KIT \$ _____ Est. Install time: 3 hrs.

S510/S530/S550/S570/S590/S595 (Tier 4) BOBCAT SKID STEER LOADERS

PART NUMBER	DEALER INSTALLED ACCESSORIES – ORDER FROM PARTS DESCRIPTION
-------------	---

Loader Guard Kits

7233421	ENGINE COMPARTMENT SEAL KIT (S530,S570,S590/S595) \$ _____ Kit includes cab/mainframe seal, tailgate seal, mainframe slot covers and lift cylinder boots. Not compatible with Rear Auxiliary Hydraulics or Rear Stabilizers. Est. Install time: 1 hr.
7246231	ENGINE COMPARTMENT SEAL KIT (S510/S550)..... \$ _____ Kit includes cab/mainframe seal, tailgate seal, mainframe slot covers and lift cylinder boots. Not compatible with Rear Auxiliary Hydraulics or Rear Stabilizers. Est. Install time: 1 hr.
7129293	FOPS KIT \$ _____ Additional shield assembly for cab top. Meets ISO 3449, Level II Requirements. Est. Install time: 1 hr.
7174128	REAR WORK LIGHTS GUARD KIT \$ _____ Est. Install time: 0.5 hr.
7174129	FRONT WORK LIGHTS GUARD KIT \$ _____ Est. Install time: 0.5 hr.
7250844	COUPLER GUARD KIT \$ _____ Est. Install time: 5 min.
7244920	MUFFLER GUARD KIT..... \$ _____ Est. Install time: 0.25 hr.
7249240	POWER BOBTACH GUARD KIT \$ _____ Est. Install time: 0.25 hr.
7203665	REAR BUMPER KIT..... \$ _____ Includes bolt-on Rubber Bumper and mounting hardware. Helps protect the rear of the loader from damage due to scraping or contact with objects in tight places. Est. Install time: 1 hr.
7222173	TILT CYLINDER SHIELD KIT \$ _____ Est. Install time: 0.5 hr.

Power Bob-Tach Kits

7310208	POWER BOB-TACH KIT..... \$ _____ Cab Accessory Harness is required, see Cab Accessory Harness & Lower Interior Panels kit for details. Must also order Power Bob-Tach Plumbing Kit. Est. Install time: 4 hrs. to install Power Bob-Tach Kit and Plumbing Kit
7310205	POWER BOB-TACH PLUMBING KIT \$ _____ Est. Install time: 4 hrs. to install Power Bob-Tach Kit and Plumbing Kit
7310206	POWER BOB-TACH PLUMBING KIT \$ _____ Est. Install time: 4 hrs. to install Power Bob-Tach Kit and Plumbing Kit

Radio

6988435	RADIO KIT \$ _____ Includes weatherproof AM/FM/NOAA Weather Band Radio, Radio Mounting Bracket, Speakers, Antenna, and Installation Hardware. Works with MP3 or other portable music player. Cab Accessory Harness is required, see Cab Accessory Harness & Lower Interior Panels kit for details. Est. Install time: 3 hrs.
6676108	RADIO HEADPHONES..... \$ _____

Rear Camera Kit

7329670	REAR CAMERA KIT \$ _____ Includes camera, display and required parts for complete installation. Est. Install time: 4 hrs.
----------------	--

Remote Control Kits

7185234	LOADER RADIO REMOTE CONTROL KIT \$ _____ Allows an operator to start/stop the engine, operate the drive system and control the lift, tilt and auxiliary hydraulic functions remotely using a Radio Transmitter. The operator must maintain visual contact with the loader and the loader's path of travel. Available for loaders equipped with Selectable Joystick Controls (SJC) or All Wheel Steer Loaders. Requires version 57 software or newer. Est. Install time: 0.5 hr.
6986516	LOADER RADIO REMOTE OPERATOR TRAINING KIT \$ _____

S510/S530/S550/S570/S590/S595 (Tier 4)

BOBCAT SKID STEER LOADERS

Reversing Fan Kits

7302979 REVERSING FAN KIT \$ _____
 Temporarily reverses cooling fan direction to blow dust and small debris from the radiator and rear screens. Includes three operating modes: Automatic, Momentary and OFF. Cab Accessory Harness is required, see Cab Accessory Harness & Lower Interior Panels kit for details. Est. Install Time: 3 hrs.

Ride Control Kits

7244604 RIDE CONTROL KIT – MANUAL..... \$ _____
 Provides a smoother ride by cushioning the lift arms when traveling over rough terrain.
 Est. Install time: 1.5 hrs.

7306287 RIDE CONTROL KIT - AUTO..... \$ _____
 Provides a smoother ride by cushioning the lift arms when traveling over rough terrain. Includes on/off switch located inside of cab.
 Est. Install time: 4 hrs.

Seats & Seat Belts

6703640 SEAT BELT KIT, 3" (STANDARD SEAT) \$ _____
 For use with Standard Seat only. Includes 3" lap belt.
 Est. Install time: 0.5 hr.

7129303 SEAT BELT KIT, 3" (SUSPENSION SEAT) \$ _____
 For use with Suspension Seat only. Includes 3" retractable lap belt.
 Est. Install time: 0.5 hr.

7128405 SEAT BELT KIT, 3-POINT \$ _____
 For use with Suspension Seat only. Includes 2" shoulder belt and 2" lap belt.
 Est. Install time: 0.5 hr.

7169480 SEAT BELT KIT-3", 3-POINT..... \$ _____
 For use with Suspension Seat only. Includes 2" shoulder belt and 3" lap belt.
 Est. Install time: 0.5 hr.

7128524 SUSPENSION SEAT..... \$ _____
 Vinyl material. Must also order a seat belt kit unless previously equipped with suspension seat.
 Est. Install time: 1 hr.

7183366 SUSPENSION SEAT, AIR RIDE \$ _____
 Vinyl material. Must also order a seat belt kit unless previously equipped with suspension seat.
 Est. Install time: 1 hr.

7312807 CLOTH HEATED AIR RIDE SEAT \$ _____
 Includes Heat on/off switch on the back of the seat. The seat is not compatible with M-Series loaders and select M2-Series loaders. See Dealer Parts Department for the correct M2-Series loader serial number breaks.

Sound Reduction Kits

7207378 SOUND REDUCTION KIT..... \$ _____
 Includes insulating materials and a hydraulic muffler to reduce sound levels at the operator's ear and for bystanders.
 Est. Install time: 2 hrs.

7207380 DELUXE SOUND KIT FOR STANDARD OR ACS CONTROLS..... \$ _____
 Includes foot pod insulating materials to reduce sound levels at the operator's ear.
 Est. Install time: 1 hr.

7207381 DELUXE SOUND KIT FOR SJC CONTROLS \$ _____
 Includes foot pod insulating materials to reduce sound levels at the operator's ear.
 Est. Install time: 1 hr.

Training Kits

6901726 BOBCAT LOADER OPERATOR TRAINING KIT \$ _____

6900641 BOBCAT LOADER SERVICE TRAINING KIT \$ _____

6904762 BOBCAT OPERATOR SAFETY DVD..... \$ _____
 Includes all of the 10-minute operator safety videos in both English and Spanish.

S510/S530/S550/S570/S590/S595 (Tier 4)

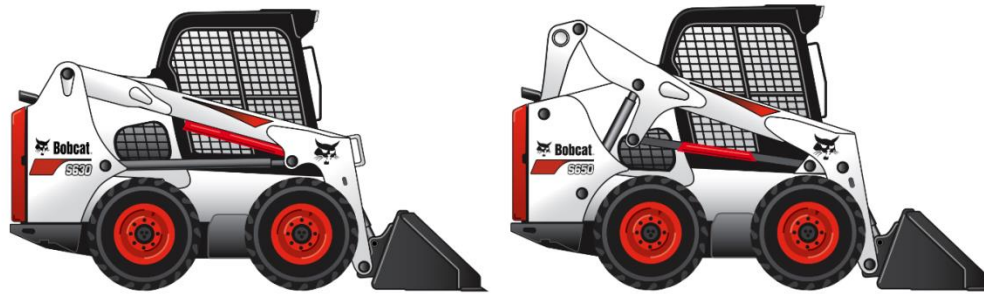
BOBCAT SKID STEER LOADERS

PART NUMBER DEALER INSTALLED ACCESSORIES – ORDER FROM PARTS
DESCRIPTION

Other Accessories

7243539	AIR DEFLECTOR KIT Est. Install time: 0.5 hr.	\$ _____
7129307	FIRE EXTINGUISHER KIT Est. Install time: 0.5 hr.	\$ _____
7257869	LOADER WEIGHLOG SCALE KIT Measures hydraulic pressure at a specific position during the lifting cycle for either static or dynamic weighing. The weighlog kit is not a certified scale. Please see Bobcat Parts Sales & Merchandising Manual for additional details. Est. Install time: 4 hrs.	\$ _____
7023550	LOCKING FUEL CAP Includes a Black Locking Fuel Cap which is keyed the same as the loader. Key is Not included. Additional locking fuel cap options are available through parts.	\$ _____
7128403	SECURITY LOCKS KIT Est. Install time: 0.5 hr.	\$ _____

S630/S650 (Tier 4) BOBCAT SKID STEER LOADER



STANDARD EQUIPMENT

74 HP Turbo Tier 4 Diesel Engine
 Auxiliary Hydraulics: Variable Flow
 Backup Alarm
 Bob-Tach
 Bobcat Interlock Control System (BICS™)
 Controls: Bobcat Standard
 Cylinder Cushioning – Lift, Tilt
 Engine/Hydraulic Systems Shutdown
 Glow Plugs (Automatically Activated)
 Horn
 Instrumentation: Engine Temperature & Fuel Gauges,
 Hourmeter, RPM and Warning Lights
 Lift Arm Support
 Lift Path: Radius (S630), Vertical (S650)

Lights, Front & Rear
 Operator Cab

- Includes: Adjustable Suspension Seat, Top & Rear Windows, Parking Brake, Seat Bar & Seat Belt
- Roll Over Protective Structure (ROPS) meets SAE-J1040 & ISO 3471
- Falling Object Protective Structure (FOPS) meets SAE-J1043 & ISO 3449, Level I; (Level II is available through Bobcat Parts)

Spark Arrestor Exhaust System
 Tires: 12-16.5, 12 PR, Bobcat Heavy Duty

QUICK SPECS

	S630	S650
Rated Operating Capacity	2,180 lbs.	2,690 lbs.
Engine Model	2.4L Bobcat Engine	2.4L Bobcat Engine
Engine Fuel	Diesel	Diesel
Engine Cooling	Liquid	Liquid
Horsepower	74	74
Hydraulic Pump Capacity – Standard Flow	23 GPM	23 GPM
Hydraulic Pump Capacity – High Flow (Optional)	30.5 GPM	30.5 GPM
Travel Speed	7.1 MPH	7.1 MPH
Travel Speed – 2 Speed Option	7.1/12.3 MPH	7.1/12.3 MPH
Operating Weight	7,610 lbs.	8,061 lbs.
Shipping Weight	7,057 lbs.	7,371 lbs.
Cab Height	81.3"	81.3"
Width (w/out Attachment)	72.1"	72.1"
Length (w/out Attachment)	108.4"	108.4"
Wheelbase	45.3"	45.3"
Reach at Maximum Height	21.4"	31.5"
Height to Hinge Pin	121.0"	124.0"

S630/S650 (Tier 4) BOBCAT SKID STEER LOADER

PART NUMBER	DESCRIPTION	SLP IN US \$
-------------	-------------	--------------

M0265	S630 SKID STEER LOADER (EQUIPPED WITH T4 ENGINE).....	\$47,025
M0269	S650 SKID STEER LOADER (EQUIPPED WITH T4 ENGINE).....	\$48,624

PART NUMBER	DESCRIPTION	SLP IN US \$
-------------	-------------	--------------

M__-P01-A91	A91 OPTION PACKAGE.....	\$11,051
M__-P01-A71	A71 OPTION PACKAGE.....	\$6,876
M__-P01-A51	A51 OPTION PACKAGE.....	\$5,292

A51
 Enclosed Cab with AC/Heat
 Cab Accessories Package*
 Power Bob-Tach

A71
 Enclosed Cab with AC/Heat
 Cab Accessories Package*
 Power Bob-Tach
 Sound Reduction
 Deluxe Instrument Panel with
 Keyless Start
 Attachment Control Kit

A91
 Enclosed Cab with AC/Heat
 Cab Accessories Package*
 Power Bob-Tach
 Sound Reduction
 Deluxe Instrument Panel with
 Keyless Start
 Attachment Control Kit
 High Flow Hydraulics
 Two Speed with SAPR Brake
 3-Point Seat Belt
 Hydraulic Bucket Positioning

PART NUMBER	DESCRIPTION	SLP IN US \$
-------------	-------------	--------------

M__-P01-H51	H51 OPTION PACKAGE	\$3,677
-------------	--------------------------	---------

H51
 Enclosed Cab with Heat
 Cab Accessories Package*
 Power Bob-Tach

PART NUMBER	DESCRIPTION	SLP IN US \$
-------------	-------------	--------------

M__-P01-O51	O51 OPTION PACKAGE	\$1,379
-------------	--------------------------	---------

O51
 Cab Accessories Package*
 Power Bob-Tach

**Cab Accessories Package: Deluxe Headliner with Dome Light, Cab Accessory Harness, Power Port, Lower Interior Panels with Storage Compartments and Cup Holder.*

S630/S650 (Tier 4)

BOBCAT SKID STEER LOADER

PART NUMBER	DESCRIPTION	FACTORY INSTALLED OPTIONS	SLP IN US \$
-------------	-------------	---------------------------	--------------

Controls

M__-R01-C03	ADVANCED CONTROL SYSTEM (ACS) [DISCONTINUED]..... ACS allows operator to select either hand or foot control of lift and tilt functions. <i>*The Cab Accessories Package is required.</i>		\$2,297
M__-R01-C04	SELECTABLE JOYSTICK CONTROL (SJC) Features include: Selectable patterns (ISO or H-Pattern), Auto Idle, Horsepower Management, Speed Management, Drive Response, Drift Compensation and Foot Pedal for Engine Speed Control. <i>*The Cab Accessories Package is required.</i>		\$945

Individual Options Requirements

NOTE: *The following options may require additional equipment, see details below. If the required equipment is not included in a Cab Package the Bobcat ordering systems will automatically add the equipment to the order.*

CAB ACCESSORIES PACKAGE

Required for Reversing Fan, Hydraulic Bucket Positioning, Automatic Ride Control, ACS, and SJC. The Cab Accessories Package is included in all Cab Packages. If a Cab Package is not ordered, you must add

\$495

7-PIN ATTACHMENT CONTROL KIT

Required for High Flow Hydraulics. The 7-Pin Attachment Control Kit is included in the A71 and A91 Cab Packages, if one of those Cab Packages is not ordered, you must add

\$245

Individual Options

M__-R03-C03	HIGH FLOW HYDRAULICS Provides 30.5 GPM and 3500 PSI for attachment operation. The 7 pin attachment control kit is required. See NOTE above.		\$2,246
M__-R04-C02	TWO SPEED..... Includes 2-speed motors. Spring Applied/Pressure Release (SAPR) Brake and 3-Point Belt. Low Travel Speed 7.1 MPH, High Travel Speed 12.3 MPH.		\$1,723
M__-R11-C02	HYDRAULIC BUCKET POSITIONING Bucket Positioning helps the operator keep the same tilt of the load during lifting. Includes On/Off switch. The Cab Accessories Package is required. See NOTE above.		\$558
M__-R05-C11	CLOTH HEATED AIR RIDE SUSPENSION SEAT Includes Heat on/off switch on the back of the seat. Must order an A or O cab package.		\$475
M__-R26-C02	RADIO..... Includes weatherproof AM/FM/NOAA Weather Band Radio, Speakers, and Antenna. Works with MP3 or other portable music player. <u>Must order</u> an A, H or O Cab Package.		\$498
M__-R32-C02	REVERSING FAN Temporarily reverses the cooling fan direction to blow dust and small debris from the radiator and rear screens. Includes three operating modes: Automatic, Momentary, & OFF. The Cab Accessories Package is required. See NOTE above.		\$616
M__-R33-C02	AUTOMATIC RIDE CONTROL Automatically activates by detecting increased hydraulic lift arm pressure when the loader is carrying material. Includes on/off switch. The Cab Accessories Package is required. See NOTE above.		\$741

S630/S650 (Tier 4) BOBCAT SKID STEER LOADER

PART NUMBER	DESCRIPTION	FACTORY INSTALLED OPTIONS	SLP IN US \$
-------------	-------------	---------------------------	--------------

Tires

Set of 4 Tires in Place of Base Equipment

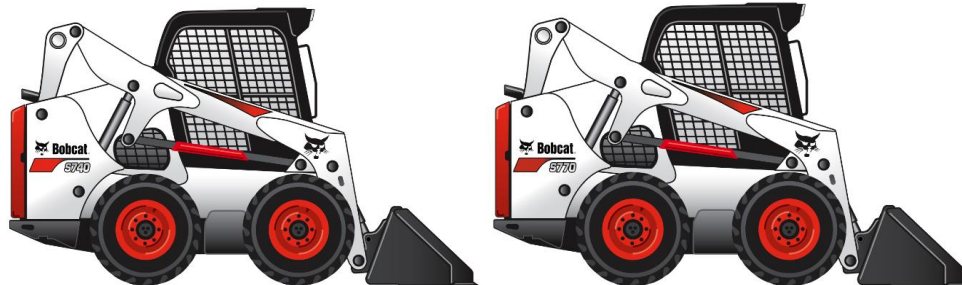
M__-R09-C03	12-16.5, 12 PR, BOBCAT HEAVY DUTY TIRES OFFSET		\$92
	Loader width 68.5"		
M__-R09-C04	12-16.5, 12 PR, BOBCAT SEVERE DUTY TIRES [DISCONTINUED]		\$915
	Loader width 71.5"		
M__-R09-C05	12-16.5, 12 PR, BOBCAT SEVERE DUTY-POLY FILL TIRES [DISCONTINUED].....		\$1,802
	Loader width 71.5"		
M__-R09-C11	33 x 15.5-16.5, 12 PR, BOBCAT SUPER FLOAT TIRES [DISCONTINUED]		\$961
	Loader width 74"		

PART NUMBER	DESCRIPTION	DEALER INSTALLED ACCESSORIES – ORDER FROM SALES	SLP IN US \$
-------------	-------------	---	--------------

Spare Wheel and Tire Assemblies

7109629	12-16.5, 12 PR, BOBCAT HEAVY DUTY TIRE ASSEMBLY-LEFT		\$394
	Spare Wheel and Tire Assembly. Loader width 72.1"		
7109630	12-16.5, 12 PR, BOBCAT HEAVY DUTY TIRE ASSEMBLY-RIGHT		\$394
	Spare Wheel and Tire Assembly. Loader width 72.1"		
7109633	12-16.5, BOBCAT HEAVY DUTY TIRE OFFSET-LEFT		\$407
	Spare Wheel and Tire Assembly. Loader width 68.5"		
7109634	12-16.5, BOBCAT HEAVY DUTY TIRE OFFSET-RIGHT		\$407
	Spare Wheel and Tire Assembly. Loader width 68.5"		
7109637	12-16.5, 12 PR, BOBCAT SEVERE DUTY TIRE ASSEMBLY		\$624
	Spare Wheel and Tire Assembly. Loader width 71.5"		
7109641	12-16.5, 12 PR, BOBCAT SEVERE DUTY-POLY-FILL TIRE ASSEMBLY		\$841
	Spare Wheel and Tire Assembly. Loader width 71.5"		
7109645	33 x 15.5-16.5, 12 PR, BOBCAT SUPER FLOAT TIRE ASSY-LEFT		\$635
	Spare Wheel and Tire Assembly. Loader width 74"		
7109646	33 x 15.5-16.5, 12 PR, BOBCAT SUPER FLOAT TIRE ASSY-RIGHT		\$635
	Spare Wheel and Tire Assembly. Loader width 74"		

S740/S770 (Tier 4) BOBCAT SKID STEER LOADER



STANDARD EQUIPMENT

74 HP Turbo Tier 4 Diesel Engine (S740)
 92 HP Turbo Tier 4 Diesel Engine (S770)
 Air Intake Heater (Automatically Activated)
 Auxiliary Hydraulics: Variable Flow
 Backup Alarm
 Bob-Tach
 Bobcat Interlock Control System (BICS™)
 Controls: Bobcat Standard
 Cylinder Cushioning – Lift, Tilt
 Engine/Hydraulic Systems Shutdown
 Horn
 Instrumentation: Engine Temperature & Fuel
 Gauges, Hourmeter, RPM and Warning Lights
 Lift Arm Support
 Lift Path: Vertical

Lights, Front & Rear
 Operator Cab

- Includes: Adjustable Suspension Seat, Top & Rear Windows, Parking Brake, Seat Bar & Seat Belt
- Roll Over Protective Structure (ROPS) meets SAE-J1040 & ISO 3471
- Falling Object Protective Structure (FOPS) meets SAE-J1043 & ISO 3449, Level I; (Level II is available through Bobcat Parts)

Tires: 12-16.5, 12 PR, Bobcat Heavy Duty

QUICK SPECS

	<u>S740</u>	<u>S770</u>
Rated Operating Capacity	3,100 lbs.	3,350 lbs.
Engine Model	3.4L Bobcat Engine	3.4L Bobcat Engine
Engine Fuel.....	Diesel	Diesel
Engine Cooling	Liquid	Liquid
Horsepower.....	74	92
Hydraulic Pump Capacity-Standard Flow	23.0 GPM	23.0 GPM
Hydraulic Pump Capacity-High Flow (Optional).....	30.5 GPM	36.6 GPM
Travel Speed	7.1 MPH	7.1 MPH
Travel Speed – 2 Speed Option	7.1/12.3 MPH	7.1/12.3 MPH
Operating Weight	8,794 lbs.	9,314 lbs.
Shipping Weight	7,917 lbs.	8,428 lbs.
Cab Height.....	81.3"	81.3"
Width (w/out Attachment).....	72.1"	72.1"
Length (w/out Attachment).....	114.3"	114.3"
Wheelbase.....	48.3"	48.3"
Reach at Maximum Height.....	31.5"	31.5"
Height to Hinge Pin	132"	132"

S740/S770 (Tier 4)

BOBCAT SKID STEER LOADER

SKID STEER LOADER

PART NUMBER	DESCRIPTION	SLP IN US \$
M0275	S740 SKID STEER LOADER (EQUIPPED WITH T4 ENGINE).....	\$53,560
M0283	S770 SKID STEER LOADER (EQUIPPED WITH T4 ENGINE).....	\$60,341

AIR CONDITIONED/HEATED CAB PACKAGES

PART NUMBER	DESCRIPTION	SLP IN US \$
M_-P01-A91	A91 OPTION PACKAGE	\$11,051
M_-P01-A71	A71 OPTION PACKAGE	\$6,876
M_-P01-A51	A51 OPTION PACKAGE	\$5,292

<p style="text-align: center;"><u>A51</u></p> <p>Enclosed Cab with AC/Heat Cab Accessories Package* Power Bob-Tach</p>	<p style="text-align: center;"><u>A71</u></p> <p>Enclosed Cab with AC/Heat Cab Accessories Package* Power Bob-Tach Sound Reduction Deluxe Instrument Panel with Keyless Start Attachment Control Kit</p>	<p style="text-align: center;"><u>A91</u></p> <p>Enclosed Cab with AC/Heat Cab Accessories Package* Power Bob-Tach Sound Reduction Deluxe Instrument Panel with Keyless Start Attachment Control Kit High Flow Hydraulics Two Speed w/ SAPR Brake 3-Point Seat Belt Hydraulic Bucket Positioning</p>
---	---	---

HEATED CAB PACKAGES

PART NUMBER	DESCRIPTION	SLP IN US \$
M_-P01-H51	H51 OPTION PACKAGE	\$3,677

<u>H51</u>
Enclosed Cab with Heat Cab Accessories Package* Power Bob-Tach

OPEN CAB PACKAGES

PART NUMBER	DESCRIPTION	SLP IN US \$
M_-P01-O51	O51 OPTION PACKAGE	\$1,379

<u>O51</u>
Cab Accessories Package* Power Bob-Tach

**Cab Accessories Package: Deluxe Headliner with Dome Light, Cab Accessory Harness, Power Port, Lower Interior Panels with Storage Compartments and Cup Holder.*

S740/S770 (Tier 4)

BOBCAT SKID STEER LOADER

PART NUMBER	FACTORY INSTALLED OPTIONS DESCRIPTION	SLP IN US \$
-------------	---------------------------------------	--------------

Controls

M__-R01-C03	ADVANCED CONTROL SYSTEM (ACS) [DISCONTINUED]..... ACS allows operator to select either hand or foot control of lift and tilt functions. <i>*The Cab Accessories Package is required.</i>	\$2,297
M__-R01-C04	SELECTABLE JOYSTICK CONTROL (SJC) Features include: Selectable patterns (ISO or H-Pattern), Auto Idle, Horsepower Management, Speed Management, Drive Response, Drift Compensation and Foot Pedal for Engine Speed Control. <i>*The Cab Accessories Package is required.</i>	\$945

Individual Options Requirements

NOTE: *The following options may require additional equipment, see details below. If the required equipment is not included in a Cab Package the Bobcat ordering systems will automatically add the equipment to the order.*

CAB ACCESSORIES PACKAGE

Required for Reversing Fan, Hydraulic Bucket Positioning, Automatic Ride Control, ACS, and SJC. The Cab Accessories Package is included in all Cab Packages. If a Cab Package is not ordered, you must add

\$477

7-PIN ATTACHMENT CONTROL KIT

Required for High Flow Hydraulics. The 7-Pin Attachment Control Kit is included in the A71 and A91 Cab Packages, if one of those Cab Packages is not ordered, you must add

\$245

Individual Options

M__-R03-C03	HIGH FLOW HYDRAULICS Provides 30.5 GPM and 3500 PSI for attachment operation. (S740) Provides 36.6 GPM and 3500 PSI for attachment operation. (S770) The 7 pin attachment control kit is required. See NOTE above.	\$2,246
M__-R04-C02	TWO SPEED..... Includes 2-speed motors. Spring Applied/Pressure Release (SAPR) Brake and 3-Point Belt. Low Travel Speed 7.1 MPH, High Travel Speed 12.3 MPH.	\$1,723
M__-R11-C02	HYDRAULIC BUCKET POSITIONING Bucket Positioning helps the operator keep the same tilt of the load during lifting. Includes On/Off switch. The Cab Accessories Package is required. See NOTE above.	\$558
M__-R05-C11	CLOTH HEATED AIR RIDE SUSPENSION SEAT Includes Heat on/off switch on the back of the seat. Must order an A or O cab package.	\$475
M__-R26-C02	RADIO..... Includes weatherproof AM/FM/NOAA Weather Band Radio, Speakers, and Antenna. Works with MP3 or other portable music player. <u>Must order</u> an A, H or O Cab Package.	\$498
M__-R32-C02	REVERSING FAN Temporarily reverses the cooling fan direction to blow dust and small debris from the radiator and rear screens. Includes three operating modes: Automatic, Momentary, & OFF. The Cab Accessories Package is required. See NOTE above.	\$616
M__-R33-C02	AUTOMATIC RIDE CONTROL Automatically activates by detecting increased hydraulic lift arm pressure when the loader is carrying material. Includes on/off switch. The Cab Accessories Package is required. See NOTE above.	\$741

S740/S770 (Tier 4)

BOBCAT SKID STEER LOADER

PART NUMBER	DESCRIPTION	FACTORY INSTALLED OPTIONS	SLP IN US \$
-------------	-------------	---------------------------	--------------

Tires

Set of 4 Tires in Place of Base Equipment

M__-R09-C03	12-16.5, 12 PR, BOBCAT HEAVY DUTY TIRES OFFSET		\$92
	Loader width 69"		
M__-R09-C04	12-16.5, 12 PR, BOBCAT SEVERE DUTY TIRES [DISCONTINUED]		\$915
	Loader width 71.5"		
M__-R09-C05	12-16.5, 12 PR, BOBCAT SEVERE DUTY-POLY FILL TIRES [DISCONTINUED].....		\$1,802
	Loader width 71.5"		
M__-R09-C11	33 X 15.5-16.5, 12 PR, BOBCAT SUPER FLOAT TIRES [DISCONTINUED].....		\$961
	Loader width 77.3"		

PART NUMBER	DESCRIPTION	DEALER INSTALLED ACCESSORIES – ORDER FROM SALES	SLP IN US \$
-------------	-------------	---	--------------

Spare Wheel and Tire Assemblies

7202899	12-16.5, 12 PR, BOBCAT HEAVY DUTY TIRE ASSEMBLY-LEFT		\$394
	Spare Wheel and Tire Assembly. Loader width 72.1"		
7202896	12-16.5, 12 PR, BOBCAT HEAVY DUTY TIRE ASSEMBLY-RIGHT		\$394
	Spare Wheel and Tire Assembly. Loader width 72.1"		
7202906	12-16.5, BOBCAT HEAVY DUTY TIRE OFFSET-LEFT		\$407
	Spare Wheel and Tire Assembly. Loader width 69"		
7202903	12-16.5, BOBCAT HEAVY DUTY TIRE OFFSET-RIGHT		\$407
	Spare Wheel and Tire Assembly. Loader width 69"		
7202930	12-16.5, 12 PR, BOBCAT SEVERE DUTY TIRE ASSEMBLY		\$624
	Spare Wheel and Tire Assembly Loader width 71.5"		
7202932	12-16.5, 12 PR, BOBCAT SEVERE DUTY-POLY-FILL TIRE ASSEMBLY		\$841
	Spare Wheel and Tire Assembly Loader width 71.5"		
7109574	33 X 15.5-16.5, 12 PR, BOBCAT SUPER FLOAT TIRE ASSY-LEFT		\$635
	Spare Wheel and Tire Assembly Loader width 77.3"		
7109575	33 X 15.5-16.5, 12 PR, BOBCAT SUPER FLOAT TIRE ASSY-RIGHT		\$635
	Spare Wheel and Tire Assembly Loader width 77.3"		

Cab Accessories

7257723	FORESTRY APPLICATIONS KIT – TIER 4 S770		\$___
	Kit is required to operate Forestry Cutter and provides operator and machine protection. For kit contents, see Forestry Cutter in Attachments Section. Not compatible with Rear Auxiliary Hydraulics. Must also order Engine Compartment Seal Kit, order from parts. Est. Install time: 6.5 hrs.		

Note: Forestry Wiper Kit (P/N 7196560) is available for the Forestry Applications Kit, order from parts.

S850 (Tier 4)

BOBCAT SKID STEER LOADER



STANDARD EQUIPMENT

- | | |
|---|--|
| <ul style="list-style-type: none"> 100 HP Turbo Tier 4 Diesel Engine 2-Speed Travel Air Intake Heater (Automatically Activated) Auxiliary Hydraulics: Variable Flow Backup Alarm Bob-Tach Bobcat Interlock Control System (BICS™) Controls: Bobcat Standard Controls with Power Assist Cylinder Cushioning – Lift, Tilt Engine/Hydraulic Systems Shutdown Horn Instrumentation: Engine Temperature & Fuel Gauges, Hourmeter, RPM and Warning Lights Lift Arm Support | <ul style="list-style-type: none"> Lift Path: Vertical Lights, Front & Rear Operator Cab •Includes: Adjustable Suspension Seat, Top & Rear Windows, Seat Bar and 3-Point Seat Belt •Roll Over Protective Structure (ROPS) meets SAE-J1040 & ISO 3471 •Falling Object Protective Structure (FOPS) meets SAE-J1043 & ISO 3449, Level I; (Level II is available through Bobcat Parts) Parking Brake – Spring Applied, Pressure Released (SAPR) Tires: 14-17.5, 14 PR, Bobcat Heavy Duty |
|---|--|

QUICK SPECS

Rated Operating Capacity	3,950 lbs.
Engine Model	3.4L Bobcat Engine
Engine Fuel	Diesel
Engine Cooling.....	Liquid
Horsepower	100
Hydraulic Pump Capacity – Standard Flow	23.0 GPM
Hydraulic Pump Capacity – High Flow (Optional).....	36.6 GPM
Travel Speed	7.1 MPH
Travel Speed – 2 Speed	7.1/12.3 MPH
Operating Weight.....	10,237 lbs.
Shipping Weight.....	9,310 lbs.
Cab Height	83.4"
Width (w/out Attachment)	79"
Length (w/out Attachment)	119.3"
Wheelbase	52.9"
Reach at Maximum Height	29.7"
Height to Hinge Pin.....	144"

S850 (Tier 4)

BOBCAT SKID STEER LOADER

PART NUMBER	DESCRIPTION	SLP IN US \$
-------------	-------------	--------------

M0289	S850 SKID STEER LOADER (EQUIPPED WITH T4 ENGINE)	\$70,212
--------------	---	-----------------

AIR CONDITIONED/HEATED CAB PACKAGES		
PART NUMBER	DESCRIPTION	SLP IN US \$

M0289-P01-A91	A91 OPTION PACKAGE	\$9,884
M0289-P01-A71	A71 OPTION PACKAGE	\$7,233
M0289-P01-A51	A51 OPTION PACKAGE	\$5,640

A51
 Enclosed Cab with AC/Heat
 Cab Accessories Package*
 Power Bob-Tach

A71
 Enclosed Cab with AC/Heat
 Cab Accessories Package*
 Power Bob-Tach
 Sound Reduction
 Deluxe Instrument Panel with
 Keyless Start
 Attachment Control Kit

A91
 Enclosed Cab with AC/Heat
 Cab Accessories Package*
 Power Bob-Tach
 Sound Reduction
 Deluxe Instrument Panel with
 Keyless Start
 Attachment Control Kit
 High Flow Hydraulics
 Hydraulic Bucket Positioning

OPEN CAB PACKAGES		
PART NUMBER	DESCRIPTION	SLP IN US \$

M0289-P01-O51	O51 OPTION PACKAGE.....	\$1,727
----------------------	--------------------------------	----------------

O51
 Cab Accessories Package*
 Power Bob-Tach

**Cab Accessories Package: Deluxe Headliner with Dome Light, Cab Accessory Harness, Power Port, Lower Interior Panels with Storage Compartments, and Cup Holder.*

S850 (Tier 4)

BOBCAT SKID STEER LOADER

PART NUMBER	FACTORY INSTALLED OPTIONS DESCRIPTION	SLP IN US \$
-------------	---------------------------------------	--------------

Controls

M0289-R01-C04	SELECTABLE JOYSTICK CONTROL (SJC) Features include: Selectable patterns (ISO or H-Pattern), Auto Idle, Horsepower Management, Speed Management, Drive Response, Drift Compensation and Foot Pedal for Engine Speed Control.	\$945
----------------------	---	--------------

Individual Options Requirements

NOTE: *The following options may require additional equipment, see details below. If the required equipment is not included in a Cab Package the Bobcat ordering systems will automatically add the equipment to the order.*

7-PIN ATTACHMENT CONTROL KIT

Required for High Flow Hydraulics. The 7-Pin Attachment Control Kit is included in the A71 and A91 Cab Packages, if one of those Cab Packages is not ordered, you must add..... **\$245**

Individual Options

The options may require additional equipment for operation, see option requirements above for details.

M0289-R03-C03	HIGH FLOW HYDRAULICS Provides 36.6 GPM and 3500 PSI for attachment operation. The 7 pin attachment control kit is required.	\$2,246
M0289-R11-C02	HYDRAULIC BUCKET POSITIONING Bucket Positioning helps the operator keep the same tilt of the load during lifting. Includes On/Off switch.	\$558
M0289-R05-C11	CLOTH HEATED AIR RIDE SUSPENSION SEAT Includes Heat on/off switch on the back of the seat. Must order an A or O cab package.	\$458
M0289-R26-C02	RADIO Includes weatherproof AM/FM/NOAA Weather Band Radio, Speakers, and Antenna. Works with MP3 or other portable music player. <u>Must order</u> an A, H, or O Cab Package.	\$498
M0289-R32-C02	REVERSING FAN Temporarily reverses the cooling fan direction to blow dust and small debris from the radiator and rear screens. Includes three operating modes: Automatic, Momentary, & OFF.	\$616
M0289-R33-C02	AUTOMATIC RIDE CONTROL Automatically activates by detecting increased hydraulic lift arm pressure when the loader is carrying material. Includes on/off switch.	\$741

Tires

Set of 4 Tires in Place of Base Equipment

M0289-R09-C04	14-17.5, 14 PR, BOBCAT SEVERE DUTY TIRES [DISCONTINUED] Loader width 79"	\$1,474
M0289-R09-C05	14-17.5, 14 PR, BOBCAT SEVERE DUTY-POLY FILL TIRES [DISCONTINUED] Loader width 79"	\$2,824

S850 (Tier 4)

BOBCAT SKID STEER LOADER

PART NUMBER	DEALER INSTALLED ACCESSORIES – ORDER FROM SALES DESCRIPTION	SLP IN US \$
<u><i>Spare Wheel and Tire Assemblies</i></u>		
7333082	14-17.5, 14 PR, BOBCAT HEAVY DUTY TIRE ASSEMBLY-LEFT Spare Wheel and Tire Assembly. Loader width 79"	\$715
7333081	14-17.5, 14 PR, BOBCAT HEAVY DUTY TIRE ASSEMBLY-RIGHT Spare Wheel and Tire Assembly. Loader width 79"	\$715
7144939	14-17.5, 14 PR, BOBCAT SEVERE DUTY TIRE ASSEMBLY..... Spare Wheel and Tire Assembly. Loader width 79"	\$1,083
7170697	14-17.5, 14 PR, BOBCAT SEVERE DUTY-POLY FILL TIRE ASSEMBLY Spare Wheel and Tire Assembly. Loader width 79"	\$1,420
<u><i>Cab Accessories</i></u>		
7257723	FORESTRY APPLICATIONS KIT – TIER 4 Kit is required to operate Forestry Cutter and provides operator and machine protection. For kit contents, see Forestry Cutter in Attachments Section. Not compatible with Rear Auxiliary Hydraulics. Must also order Engine Compartment Seal Kit, order from parts. Est. Install time: 6.5 hrs.	\$ _____
Note:	Forestry Wiper Kit (P/N 7196560) is available for the Forestry Applications Kit, order from parts.	

PART NUMBER	DEALER INSTALLED ACCESSORIES – ORDER FROM PARTS DESCRIPTION
-------------	---

Part numbers for kits in this section are current as of October 2016 and pertain to current loader models as of that date. To ensure having the correct Part Number for a Dealer Installed Accessory, obtain the loader model and serial number and check with Dealer Parts Department. For the most current Dealer Installed Accessories pricing, refer to BobQuote or Dealer Parts Department.

Cab Accessories – Enclosures, Doors, Windows

7128393	CAB ENCLOSURE DOOR KIT \$ _____ Cab Accessory Harness is required, see Cab Accessory Harness & Lower Interior Panels kit for details. Includes Front Door with Sensor Switch and Wiper/Washer. Must also order Side Windows Kit and Cab Seals Kit to completely enclose cab. Est. Install time: 3.5 hrs.	
7186723	FOPS WINDOW KIT \$ _____ Est. Install time: 10 min.	
7174127	FORESTRY DOOR KIT \$ _____ Cab Accessory Harness is required, see Cab Accessory Harness & Lower Interior Panels kit for details. Est. Install time: 2 hrs.	
7182335	SIDE WINDOW LEXAN KIT \$ _____ Includes 2 Sliding Side Lexan Windows. Est. Install time: 1 hr.	
7128342	SLIDING SIDE WINDOWS KIT \$ _____ Includes 2 Sliding Side Windows. Must also order Cab Enclosure Door Kit to completely enclose cab. Est. Install time: 1 hr.	
7128395	SPECIAL APPLICATIONS POLYCARBONATE DOOR KIT \$ _____ Provides added operator protection during some attachment applications. Includes ½" thick polycarbonate front door. Must order a Side Windows Kit, Cab Seals Kit and Special Applications Rear Window to completely enclose cab. Est. Install time: 3 hrs.	
7214673	SPECIAL APPLICATIONS POLYCARBONATE REAR WINDOW KIT \$ _____ Provides added operator protection during some attachment applications. Includes ½" thick polycarbonate rear window. Must order a Side Windows Kit, Cab Seals Kit and Special Applications Front Door to completely enclose cab. Est. Install time: 0.5 hr.	

Cab Accessories – Heat and Air Conditioning

7238378	AIR CONDITIONING KIT (S630/S650) \$ _____ Loader must be equipped with Cab Enclosure with Heater. Est. Install time: 8 hrs.	
7252056	AIR CONDITIONING KIT (S740/S750/S770) \$ _____ Loader must be equipped with Cab Enclosure with Heater. Est. Install time: 8 hrs.	
7252060	AIR CONDITIONING KIT (S850) \$ _____ Loader must be equipped with Cab Enclosure with Heater. Est. Install time: 8 hrs.	
7128484	HEATER KIT \$ _____ Cab Accessory Harness is required, see Cab Accessory Harness & Lower Interior Panels kit for details. Must also order heater plumbing kit and Deluxe Heater/Air Conditioning Headliner Kit. Est. Install time: 5 hrs. to install heater and plumbing kit	
7238377	HEATER PLUMBING KIT (S630/S650) \$ _____ Est. Install time: 5 hrs. to install heater and plumbing kit	
7256971	HEATER PLUMBING KIT (S740) \$ _____ Est. Install time: 5 hrs. to install heater and plumbing kit	
7252058	HEATER PLUMBING KIT (S750/S770) \$ _____ Est. Install time: 5 hrs. to install heater and plumbing kit	
7252062	HEATER PLUMBING KIT (S850) \$ _____ Est. Install time: 5 hrs. to install heater and plumbing kit	
7200657	LOWER AIR DUCT KIT \$ _____ Includes two additional air ducts to direct air flow towards the foot well and lower cab door area. Loader must be equipped with Cab Enclosure and Heater or Air Conditioning. Est. Install time: 1-3 hrs. (depends on loader model and s/n)	

PART NUMBER	DEALER INSTALLED ACCESSORIES – ORDER FROM PARTS	DESCRIPTION
-------------	---	-------------

Cab Accessories – Other

	CAB ACCESSORY HARNESS & LOWER INTERIOR PANELS KIT	\$ _____
	See Dealer Parts Department for the correct kit part number. This kit is needed for Base Cabs Only when field installing any of the following accessories; cab enclosure with heat or air conditioning, four-way flasher / turn signal kit, hydraulic bucket positioning, power Bob-Tach kit, rear wiper kit, rotating beacon kit, strobe light kit or radio. Includes Cab Accessory Harness and Lower Interior Panels. Need to order Deluxe Headliner Kit or Deluxe Heater/Air Conditioning Headliner Kit & Cup Holder Kit to finish interior. Est. Install time: 5 hrs.	
7167395	CUP HOLDER KIT	\$ _____
	Lower Interior Panels are required, see Cab Accessory Harness & Lower Interior Panels kit for details. Includes side and front cup holder. Est. Install time: 1 hr.	
7174903	CAB SEALS KIT (S630/S650/S740/S750/S770)	\$ _____
	Includes bottom of cab and foot pod area seals. Needed to completely enclose the cab. Est. Install time: 2.5 hrs.	
7192140	CAB SEALS KIT (S850)	\$ _____
	Includes bottom of cab and foot pod area seals. Needed to completely enclose the cab. Est. Install time: 2.5 hrs.	
7170782	DELUXE CAB GAS SPRING KIT	\$ _____
	3rd gas spring for enclosed cab. Est. Install time: 1 hr.	
7156253	DELUXE HEADLINER KIT	\$ _____
	Includes headliner with light and rear corner cab trim. Est. Install time: 1 hr.	
7174171	DELUXE HEATER / AIR CONDITIONING HEADLINER KIT	\$ _____
	Includes Headliner with interior light, air conditioning/heater vents and rear corner cab trim. Needed to upgrade non-AC/Heater cab to include AC/Heat. Est. Install time: 1 hr.	
7196560	FORESTRY WIPER KIT	\$ _____
	Loader must be equipped with Forestry Door; Reference P/N 7174127 Forestry Door or 7230523 Forestry Applications Kit for detail. Est. Install time: 1 hr.	
7238900	HEPA FILTER KIT	\$ _____
	Est. Install time: 0.5 hr.	
7240148	INTERMITTENT WIPER KIT	\$ _____
	Includes intermittent wiper switch, cover, harness and tie straps. Kit allows operator to adjust the speed of the wiper to match the operating conditions. Est. Install time: 1 hr.	
6725946	REAR WINDOW EXTERNAL REMOVAL KIT	\$ _____
	Recommended for use with Loader Radio Remote Control kit. Est. Install time: 1 hr.	
7225133	REAR WIPER KIT	\$ _____
	Cab Accessory Harness is required, see Cab Accessory Harness & Lower Interior Panels kit for details. Deluxe Headliner, Lower Interior Panels and Front Door with Wiper are also required. Wiper is activated by a switch on the rear wiper motor. Est. Install time: 4 hrs.	
7172897	RESEAL PLUGS KIT	\$ _____
	Includes plugs to seal cab and frame after the removal of the following: FOPS Kit, Single Point Lift Kit, Four Point Lift Kit, and Backhoe Attachment. Est. Install time: 1 hr.	
7172903	WHITE DECAL KIT (CAB TOP)	\$ _____
	Applied to cab top to maintain a cooler temperature inside the operator's cab. Est. Install time: 0.5 hr.	

PART NUMBER	DEALER INSTALLED ACCESSORIES – ORDER FROM PARTS DESCRIPTION
-------------	---

Counterweight Kits

7204279	COUNTERWEIGHT KIT- FRONT AXLE (S630/S650/S740/S750/S770).....	\$ _____
	Includes axle weights and hardware. Increases down force on attachments. It does not increase the Rated Operating Capacity (ROC) of the loader. Est. Install time: 1.5 hrs.	
7129250	COUNTERWEIGHT KIT, 200 LBS.....	\$ _____
	Includes (4) 50 lb weights that bolt to rear uprights of loader. See operator’s manual for ROC increase. Not compatible with the Quick-Tach Water Kit or Rear Stabilizers. Est. Install time: 1 hr.	
7129251	COUNTERWEIGHT KIT, 300 LBS.....	\$ _____
	Includes (6) 50 lb weights that bolt to rear uprights of loader. See operator’s manual for ROC increase. Not compatible with the Quick-Tach Water Kit or Rear Stabilizers. Est. Install time: 1 hr.	
7129252	COUNTERWEIGHT KIT, 400 LBS (S740/S750/S770/S850)	\$ _____
	Includes (8) 50 lb weights that bolt to rear uprights of loader. See operator’s manual for ROC increase. Not compatible with the Quick-Tach Water Kit or Rear Stabilizers. Est. Install time: 1 hr.	

Electrical Accessories

_____	ATTACHMENT CONTROL KIT	\$ _____
	For complete listing of Attachment Control Kits, P/N’s and Descriptions – Refer to Attachments Section of the Price Pages.	
7169103	CAB ACCESSORY ADAPTER HARNESS	\$ _____
	For Loaders without Cab Accessory Harness. Needed for Strobe, Beacon and Four-Way Flasher. Est. Install time: 0.5 hr.	
7128338	FOUR-WAY FLASHER / TURN SIGNAL KIT	\$ _____
	Cab Accessory Harness or Cab Accessory Adapter Harness is required; Reference Cab Accessory Harness & Lower Interior Panels kit or Cab Accessory Adapter Harness for details. Est. Install time: 1 hr.	
7129299	ROTATING BEACON KIT.....	\$ _____
	Cab Accessory Harness or Cab Accessory Adapter Harness is required; Reference Cab Accessory Harness & Lower Interior Panels kit or Cab Accessory Adapter Harness for details. Est. Install time: 1 hr.	
7129301	STROBE LIGHT KIT, AMBER	\$ _____
	Cab Accessory Harness or Cab Accessory Adapter Harness is required; Reference Cab Accessory Harness & Lower Interior Panels kit or Cab Accessory Adapter Harness for details. Est. Install time: 1 hr.	
7256348	SIDE LIGHT KIT	\$ _____
	Includes two LED side lights Est. Install time: 0.5 hr.	

Engine Accessories

_____	AIR CLEANER PRE-CLEANER (S630/S650) Order the following from parts: Hose (iT4: 7157923, T4: 7234601), Hose Clamp (iT4: 5HM42, T4: 5HM53), and Instructions (iT4: 7149931, T4: 6990831). Est. Install time: 1 hr.	
7265891	SCR INHIBIT SWITCH KIT.....	\$ _____
	For S740/S750/S770/S850 equipped with Tier 4 Engine. Allows operator to perform a parked regeneration if too much soot is allowed to accumulate in the DPf. Est. Install time: 1 hr.	
7239665	ENGINE BLOCK HEATER KIT – TIER 4 (S630/S650/S740/S750/S770/S850)	\$ _____

PART NUMBER	DEALER INSTALLED ACCESSORIES – ORDER FROM PARTS	
	DESCRIPTION	

Hydraulic Accessories

7129447	HYDRAULIC BUCKET POSITIONING KIT (S630) Bucket Positioning helps the operator keep the same tilt position of the load during lifting. Cab Accessory Harness is required, see Cab Accessory Harness & Lower Interior Panels kit for details. Includes on/off switch. Est. Install time: 3 hrs.	\$ _____
7128442	HYDRAULIC BUCKET POSITIONING KIT (S650) Bucket Positioning helps the operator keep the same tilt position of the load during lifting. Cab Accessory Harness is required, see Cab Accessory Harness & Lower Interior Panels kit for details. Includes on/off switch. Est. Install time: 3 hrs.	\$ _____
7188811	HYDRAULIC BUCKET POSITIONING KIT (S850) Bucket Positioning helps the operator keep the same tilt position of the load during lifting. Cab Accessory Harness is required, see Cab Accessory Harness & Lower Interior Panels kit for details. Includes on/off switch. Est. Install time: 3 hrs.	\$ _____
7207408	LIFT CYLINDER CUSHION PISTON (S650/S740/S750/S770) Softens the contact between the lift arms and mainframe reducing noise. Must also order Piston Nut p/n 6810540.	\$ _____
7231414	REAR AUXILIARY HYDRAULIC KIT (S630) Provides a flow of 8.5 GPM. Est. Install time: 10 hrs.	\$ _____
7231436	REAR AUXILIARY HYDRAULIC KIT (S650) Provides a flow of 8.5 GPM. Est. Install time: 10 hrs.	\$ _____
7220912	REAR AUXILIARY HYDRAULIC KIT (S740) Provides a flow of 8.5 GPM. Est. Install time: 10 hrs.	\$ _____
7268419	REAR AUXILIARY HYDRAULIC KIT (S750/S770) Provides a flow of 8.5 GPM. Est. Install time: 10 hrs.	\$ _____
7270096	REAR AUXILIARY HYDRAULIC KIT (S850) Provides a flow of 8.5 GPM. Est. Install time: 10 hrs.	\$ _____

Instrumentation

7213928	DELUXE INSTRUMENT PANEL WITH KEYLESS START Includes keyless start, feature lockouts, help screens, system diagnostic capability, clock, job clock and more. Est. Install time: 1 hr.	\$ _____
7213929	KEYLESS START PANEL KIT Allows operator to start the loader by entering a reprogrammable number code. Est. Install time: 1 hr.	\$ _____

Lift Kits

7128411	FOUR-POINT LIFT KIT (S630) Cannot be used on loaders equipped with Backhoe Mounting Kit. Est. Install time: 2 hrs.	\$ _____
7156605	FOUR-POINT LIFT KIT (S650/S740/S750/S770) Cannot be used on loaders equipped with Backhoe Mounting Kit. Est. Install time: 2 hrs.	\$ _____
7150698	FOUR-POINT LIFT KIT (S850) Cannot be used on loaders equipped with Backhoe Mounting Kit. Est. Install time: 2 hrs.	\$ _____
7226713	SINGLE POINT LIFT KIT (S630/S650/S740/S750/S770) Est. Install time: 3 hrs.	\$ _____
7128432	SINGLE POINT LIFT KIT (S850) Est. Install time: 3 hrs.	\$ _____

PART NUMBER	DEALER INSTALLED ACCESSORIES – ORDER FROM PARTS	
	DESCRIPTION	

Loader Guard Kits

7206200	ENGINE COMPARTMENT SEAL KIT (S630) Kit includes cab/mainframe seal, tailgate seal, mainframe slot covers and lift cylinder boots. Not compatible with Rear Auxiliary Hydraulics or Rear Stabilizers. Est. Install time: 1.5 hrs.	\$ _____
7209981	ENGINE COMPARTMENT SEAL KIT (S650) Kit includes cab/mainframe seal, tailgate seal, mainframe slot covers and lift cylinder boots. Not compatible with Rear Auxiliary Hydraulics or Rear Stabilizers. Est. Install time: 1.5 hrs.	\$ _____
7190789	ENGINE COMPARTMENT SEAL KIT (S740/S750/S770) Required when using M-series 700 Platform machines with forestry cutters. Kit includes cab/mainframe seal, tailgate seal, mainframe slot covers and lift cylinder boots. Not compatible with Rear Auxiliary Hydraulics or Rear Stabilizers. Est. Install time: 2 hrs.	\$ _____
7179952	ENGINE COMPARTMENT SEAL KIT (S850) Required when using M-series 800 Platform machines with forestry cutters. Kit includes cab/Mainframe seal, tailgate seal, mainframe slot covers and lift cylinder boots. Not compatible with Rear Auxiliary Hydraulics or Rear Stabilizers. Est. Install time: 2 hr.	\$ _____
7129293	FOPS KIT Additional shield assembly for cab top. Meets ISO 3449, Level II Requirements. Est. Install time: 1.5 hrs.	\$ _____
7174128	REAR WORK LIGHTS GUARD KIT (S740) Est. Install time: 0.5 hr.	\$ _____
7257724	REAR WORK LIGHTS GUARD KIT (S750/S770/S850) Est. Install time: 0.5 hr.	\$ _____
7174129	FRONT WORK LIGHTS GUARD KIT Est. Install time: 0.5 hr.	\$ _____
7244920	MUFFLER GUARD KIT Est. Install time: 0.25 hr.	\$ _____
7249240	POWER BOBTACH GUARD KIT Est. Install time: 0.25 hr.	\$ _____
7250844	COUPLER GUARD KIT Est. Install time: 5 min.	\$ _____
7203665	REAR BUMPER KIT Includes bolt-on Rubber Bumper and mounting hardware. Helps protect the rear of the loader from damage due to scraping or contact with objects in tight places. Est. Install time: 1 hr.	\$ _____
7187059	TILT CYLINDER SHIELD KIT (S630/S650/S740/S750/S770) Est. Install time: 0.5 hr.	\$ _____
7187241	TILT CYLINDER SHIELD KIT (S850) Est. Install time: 0.5 hr.	\$ _____

Power Bob-Tach Kits

7310665	POWER BOB-TACH KIT Cab Accessory Harness is required, see Cab Accessory Harness & Lower Interior Panels kit for details. Must also order Power Bob-Tach Plumbing Kit. Est. Install time: 4 hrs. to install Power Bob-Tach Kit and Plumbing Kit	\$ _____
7310661	POWER BOB-TACH PLUMBING KIT (S630) Est. Install time: 4 hrs. to install Power Bob-Tach Kit and Plumbing Kit	\$ _____
7310663	POWER BOB-TACH PLUMBING KIT (S650) Est. Install time: 4 hrs. to install Power Bob-Tach Kit and Plumbing Kit	\$ _____
7310805	POWER BOB-TACH PLUMBING KIT (S740/S750/S770) Est. Install time: 4 hrs. to install Power Bob-Tach Kit and Plumbing Kit	\$ _____
_____	POWER BOB-TACH PLUMBING KIT – TIER 4 (S850) Est. Install time: 4 hrs. to install Power Bob-Tach Kit and Plumbing Kit	\$ _____

PART NUMBER	DEALER INSTALLED ACCESSORIES – ORDER FROM PARTS DESCRIPTION	
<u>Radio</u>		
6988435	RADIO KIT Includes weatherproof AM/FM/NOAA Weather Band Radio, Radio Mounting Bracket, Speakers, Antenna, and Installation Hardware. Works with MP3 or other portable music player. Cab Accessory Harness is required, see Cab Accessory Harness & Lower Interior Panels kit for details. Est. Install time: 3 hrs.	\$ _____
6676108	RADIO HEADPHONES	\$ _____
<u>Rear Camera Kit</u>		
7329670	REAR CAMERA KIT	\$ _____
<u>Remote Control Kits</u>		
7185234	LOADER RADIO REMOTE CONTROL KIT	\$ _____
Allows an operator to start/stop the engine, operate the drive system and control the lift, tilt and auxiliary hydraulic functions remotely using a Radio Transmitter. The operator must maintain visual contact with the loader and the loader’s path of travel. Available for loaders equipped with Selectable Joystick Controls (SJC) or All Wheel Steer Loaders. Requires version 57 software or newer. Est. Install time: 0.5 hr.		
6986516	LOADER RADIO REMOTE OPERATOR TRAINING KIT	\$ _____
<u>Reversing Fan Kits</u>		
7307657	REVERSING FAN KIT (S630/S650)	\$ _____
Temporarily reverses cooling fan direction to blow dust and small debris from the radiator and rear screens. Includes three operating modes: Automatic, Momentary and OFF. Cab Accessory Harness is required, see Cab Accessory Harness & Lower Interior Panels kit for details. Est. Install Time: 3 hrs.		
7307658	REVERSING FAN KIT (S740/S750/S770)	\$ _____
Temporarily reverses cooling fan direction to blow dust and small debris from the radiator and rear screens. Includes three operating modes: Automatic, Momentary and OFF. Cab Accessory Harness is required, see Cab Accessory Harness & Lower Interior Panels kit for details. Est. Install Time: 3 hrs.		
7307659	REVERSING FAN KIT (S850)	\$ _____
Temporarily reverses cooling fan direction to blow dust and small debris from the radiator and rear screens. Includes three operating modes: Automatic, Momentary and OFF. Cab Accessory Harness is required, see Cab Accessory Harness & Lower Interior Panels kit for details. Est. Install Time: 3 hrs.		
<u>Ride Control Kits</u>		
7300378	RIDE CONTROL KIT (S630/S650) - MANUAL	\$ _____
Provides a smoother ride by cushioning the lift arms when traveling over rough terrain. Est. Install time: 1.5 hrs.		
7306398	RIDE CONTROL KIT (S630/S650) - AUTO	\$ _____
Provides a smoother ride by cushioning the lift arms when traveling over rough terrain. Includes on/off switch inside of cab. Est. Install time: 4 hrs.		
7300393	RIDE CONTROL KIT – TIER 4 (S740/S750/S770/S850) - MANUAL	\$ _____
Provides a smoother ride by cushioning the lift arms when traveling over rough terrain. Est. Install time: 1.5 hrs.		
7306402	RIDE CONTROL KIT – TIER 4 (S740/S750/S770) - AUTO	\$ _____
Provides a smoother ride by cushioning the lift arms when traveling over rough terrain. Includes on/off switch inside of cab. Est. Install time: 4 hrs.		
7306404	RIDE CONTROL KIT – TIER 4 (S850) - AUTO	\$ _____
Provides a smoother ride by cushioning the lift arms when traveling over rough terrain. Includes on/off switch inside of cab. Est. Install time: 4 hrs.		

PART NUMBER	DEALER INSTALLED ACCESSORIES – ORDER FROM PARTS	
	DESCRIPTION	

Seats & Seat Belts

6703640	SEAT BELT KIT, 3" (STANDARD SEAT)..... For use with Standard Seat only. Includes 3" lap belt. Est. Install time: 0.5 hr.	\$ _____
7129303	SEAT BELT KIT, 3" (SUSPENSION SEAT) For use with Suspension Seat only. Includes 3" retractable lap belt. Est. Install time: 0.5 hr.	\$ _____
7128405	SEAT BELT KIT, 3-POINT For use with Suspension Seat only. Includes 2" shoulder belt and 2" lap belt. Est. Install time: 0.5 hr.	\$ _____
7169480	SEAT BELT KIT-3", 3-POINT..... For use with Suspension Seat only. Includes 2" shoulder belt and 3" lap belt. Est. Install time: 0.5 hr.	\$ _____
7128524	SUSPENSION SEAT Vinyl material. Must also order a seat belt kit unless previously equipped with suspension seat. Est. Install time: 1 hr.	\$ _____
7183366	SUSPENSION SEAT, AIR RIDE Vinyl material. Must also order a seat belt kit unless previously equipped with suspension seat. Est. Install time: 1 hr.	\$ _____
7183366	CLOTH HEATED AIR RIDE SEAT..... Includes Heat on/off switch on the back of the seat. The seat is not compatible with M-Series loaders and select M2-Series loaders. See Dealer Parts Department for the correct M2-Series loader serial number breaks.	\$ _____

Sound Reduction Kits

7213452	SOUND REDUCTION KIT (S630/S650) Includes insulating materials and a hydraulic muffler to reduce sound levels at the operator's ear and for bystanders. Est. Install time: 2 hrs.	\$ _____
_____	SOUND REDUCTION KIT (S850)..... Includes insulating materials and a hydraulic muffler to reduce sound levels at the operator's ear and for bystanders. Est. Install time: 2 hrs.	\$ _____
_____	DELUXE SOUND KIT FOR STANDARD CONTROLS WITH POWER ASSIST (S850)..... Includes foot pod insulating materials to reduce sound levels at the operator's ear. Est. Install time: 1 hr.	\$ _____
_____	DELUXE SOUND KIT FOR STANDARD OR ACS CONTROLS (S630/S650/S750/S770) Includes foot pod insulating materials to reduce sound levels at the operator's ear. Est. Install time: 1 hr.	\$ _____
_____	DELUXE SOUND KIT FOR SJC CONTROLS..... Includes foot pod insulating materials to reduce sound levels at the operator's ear. Est. Install time: 1 hr.	\$ _____

Training Kits

6901726	BOBCAT LOADER OPERATOR TRAINING KIT	\$ _____
6900641	BOBCAT LOADER SERVICE TRAINING KIT	\$ _____
6904762	BOBCAT OPERATOR SAFETY DVD Includes all of the 10-minute operator safety videos in both English and Spanish.	\$ _____

PART NUMBER	DEALER INSTALLED ACCESSORIES – ORDER FROM PARTS DESCRIPTION
----------------	--

Other Accessories

7257437	AIR DEFLECTOR KIT Est. Install time: 0.5 hr.	\$ _____
7129307	FIRE EXTINGUISHER KIT Est. Install time: 0.5 hr.	\$ _____
7232264	HP ASPIRATION KIT Est. Install time: 0.5 hr.	\$ _____
7257869	LOADER WEIGHLOG SCALE KIT Measures hydraulic pressure at a specific position during the lifting cycle for either static or dynamic weighing. The weighlog kit is not a certified scale. Please see Bobcat Parts Sales & Merchandising Manual for additional details. Est. Install time: 4 hrs.	\$ _____
_____	LOCKING FUEL CAP Includes a Black Locking Fuel Cap which is keyed the same as the loader. Key is Not included. Additional locking fuel cap options are available through parts.	\$ _____
7128403	SECURITY LOCKS KIT Est. Install time: 0.5 hr.	\$ _____